

S3XE.3

NEW GENERATION RC CAR

1/8 OFFROAD 4WD ELECTRIC
RC PROFESSIONAL BUGGY



INSTRUCTION MANUAL

WIRC
PROFESSIONAL RC CAR

WWW.WIRCACING.COM



INTRODUCTION

SBXE is a new generation high quality 1/8 scale electric off-road buggy.
SBXE is supplied in a box, you can download the Instruction manual from www.wircracing.com
Its use is intended for more than 16 years old persons with experience on rc model car field.
Children and all the persons without this requirement MUST have direct supervision of a knowledgeable adult responsible.

SAFETY PRECAUTIONS

Instruction Manual MUST be read and fully understood before to start building and operating functions.
Always keep Instruction Manual in safety place, ready to be consulted for any reference you need.
Use only original WRC spare parts.

GENERAL INFORMATION

Assemble the kit only away from the reach of children.
Follow the building and operating instructions using the utmost care.
Don't put any part of your body inside rotating and moving elements as this may cause damage or serious injury.
Check and clean the model before putting it away.
Don't use your model car in public places or in roads and areas where it could generate conflict with person or vehicular traffic.
The model car is controlled by radio: you MUST put great care to avoid loss of radio control always keeping a safety margin all around your model in order to prevent any collision.
Operating frequency: check and be sure it is clear and not shared with anybody at same time; it could cause loss of control of the RC model.
Always turn on your transmitter before you turn on the receiver in the car and always turn off the receiver before you turn off your transmitter.
Keep the wheels of the model off the ground when checking the operation of the radio equipment.
Disconnect the battery pack before storing your model.

WARRANTY

WIRC guarantees this model kit to be free from defects in both material and workmanship within 30 days of purchase.
The total monetary value under warranty will in no case exceed the cost of the original kit purchased.
This warranty doesn't cover any components damaged by use or modification or as result of wear.
Part or parts missing from this kit must be reported within 30 days of purchase.
No part or parts will be sent under warranty without proof of purchase.
If you find a defective or missing part, contact the local distributor.
Customer service and support will be provided through local hobby store.
No warranties are expressed or implied that cover damage caused by what is considered normal use or cover or imply how long any model cars' components or electric components will last before requiring replacement.
Due to the high performance level of this model car you will need to periodically maintain and replace consumable components; any and all warranty coverage will not cover replacement of any part or component damaged by neglect, abuse or improper or unreasonable use.
This includes but is not limited to damage from crashing, excessive moisture, improper use or no maintenance or user modifications which compromise the integrity of components.
Warranty will not cover components that are considered consumable on RC model car.
WIRC doesn't pay nor refund on any component sent from WIRC or its distributor for warranty.
WIRC reserves the right to make final determination of the warranty status of any component or part
Use only original WIRC spare part:

CUSTOMER SUPPORT

Please don't hesitate to contact WIRC support at info@wircracing.com for any problem or question.
Also kindly visit our website www.wircracing.com to find last updates, set-up information, option parts and other information.

World racing car s.r.l.

Via A.Volta 2 Bis
36040 Brendola (VI)
ITALY

Phone: 0039 0 444 1792263
E-mail: info@wircracing.com
Website: www.wircracing.com



TECHNICAL INFORMATION

- WHEELS LOCK: Lightweight 17 mm 7075 T6 Nut
- CHASSIS: 3.0 mm Swiss 7075 T6 aluminium
- RADIO PLATE: Composite Material
- DRIVETRAIN TYPE: Spring steel CVD Driveshafts
- FRONT DIFFERENTIAL: Differential Gear
- REAR DIFFERENTIAL: Differential Gear
- SUSPENSION: Pivot ball suspension
- RIDE HEIGHT: Adjustable Front & Rear
- CAMBER: Adjustable Front & Rear
- CASTER: Adjustable Front
- TOE: Adjustable Front & Rear
- ROLL CENTER: Adjustable Front & Rear
- ACKERMANN: Adjustable Front
- ANTI-ROLL BARS: Adjustable Front & Rear

- WIDTH 310 mm
- WHEEL BASE adjustable 315-320 mm.

ADDITIONAL ITEMS NEEDED FOR COMPLETION (REQUIRED BUT NOT INCLUDED IN THE KIT)



ENGINE



TRANSMITTER



RECEIVER



STEERING SERVO



BATTERIES
FOR TRANSMITTER
AND RECEIVER



WHEEL - TYRES - INSERTS



2 X 7.4 V
LIPO BATTERIES

OR



1 X 14.8 V
LIPO BATTERIE

TOOLS REQUIRED

THESE TOOLS ARE NOT INCLUDED IN THE KIT BUT ARE REQUIRED FOR PROPER ASSEMBLY



ALLENS:
1.5 mm
2 mm
2.5 mm
3 mm



SOCKET
5mm



SIDE CUTTERS



COMBINATION PLIERS



TOOL FOR
TURNBUCKLES/NUTS



WHEEL NUT TOOL
17mm



GREASE



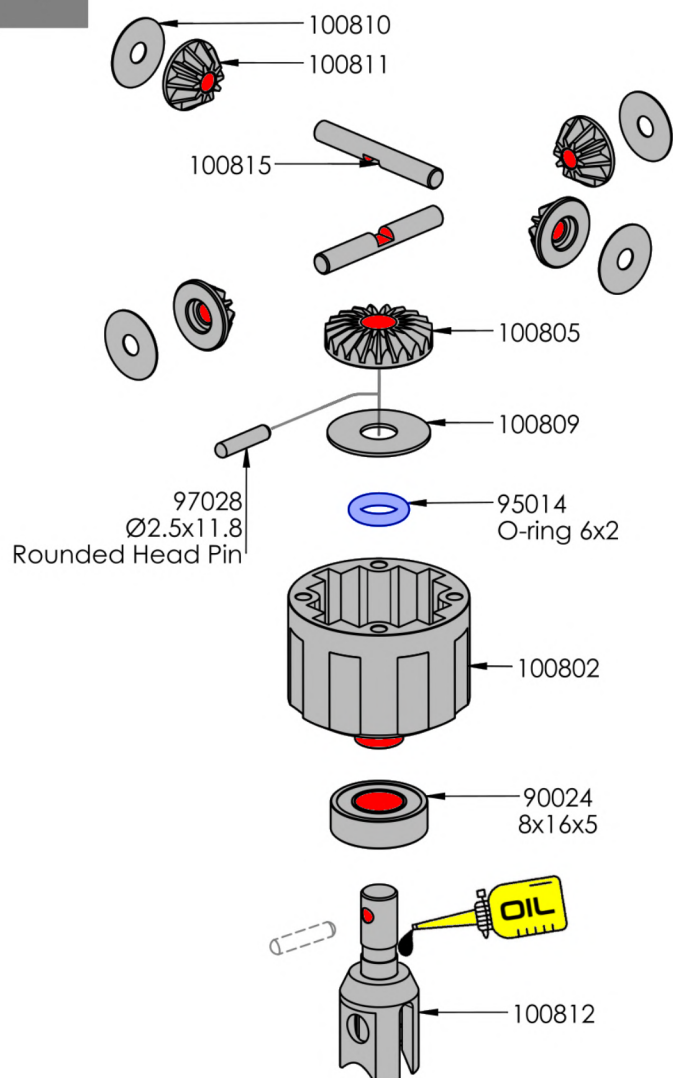
OILS:
5000 CST
BEARING OIL

NOTICE:

THE FOLLOWING ITEMS ARE NEEDED FOR COMPLETION OF THE SBX; THEY ARE NOT INCLUDED IN THIS KIT (UNLESS NOTED) AND SHOULD BE OBTAINED FROM YOUR LOCAL HOBBY SHOP.
BE SURE TO READ THE INSTRUCTION COMPLETELY PRIOR TO ASSEMBLY

Central Diff. Gear

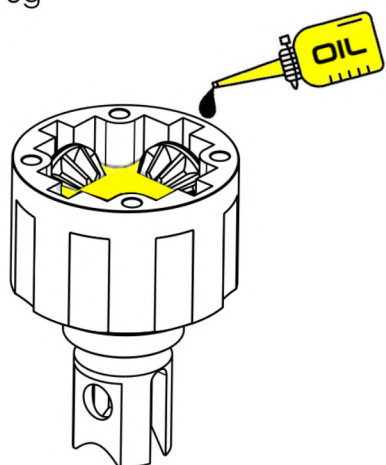
1



2

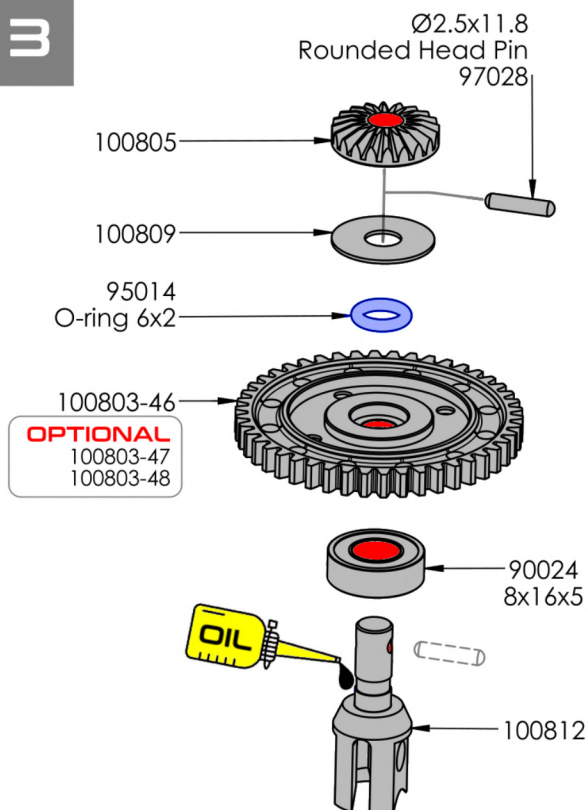
DIFFERENTIAL OIL :

Type: 5000 cst
Weight: 3g

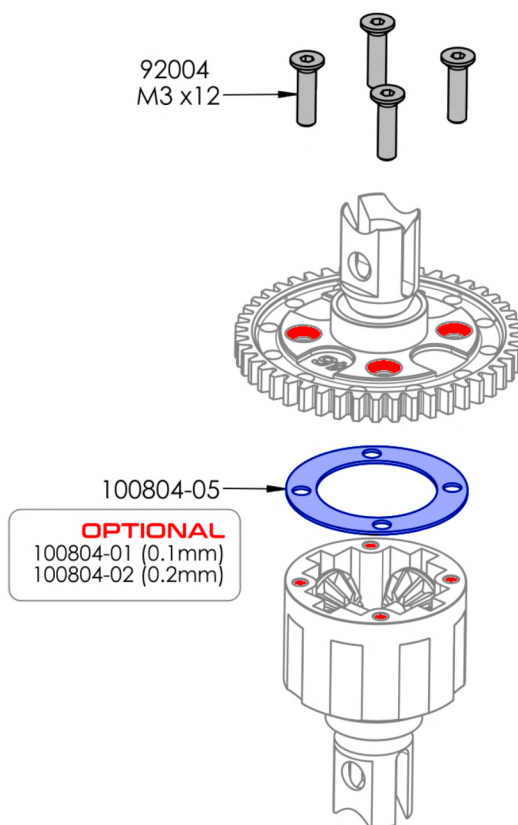


Fill the differential up to the top of the pin. **DO NOT** fill the diff. to the top of the housing.

3

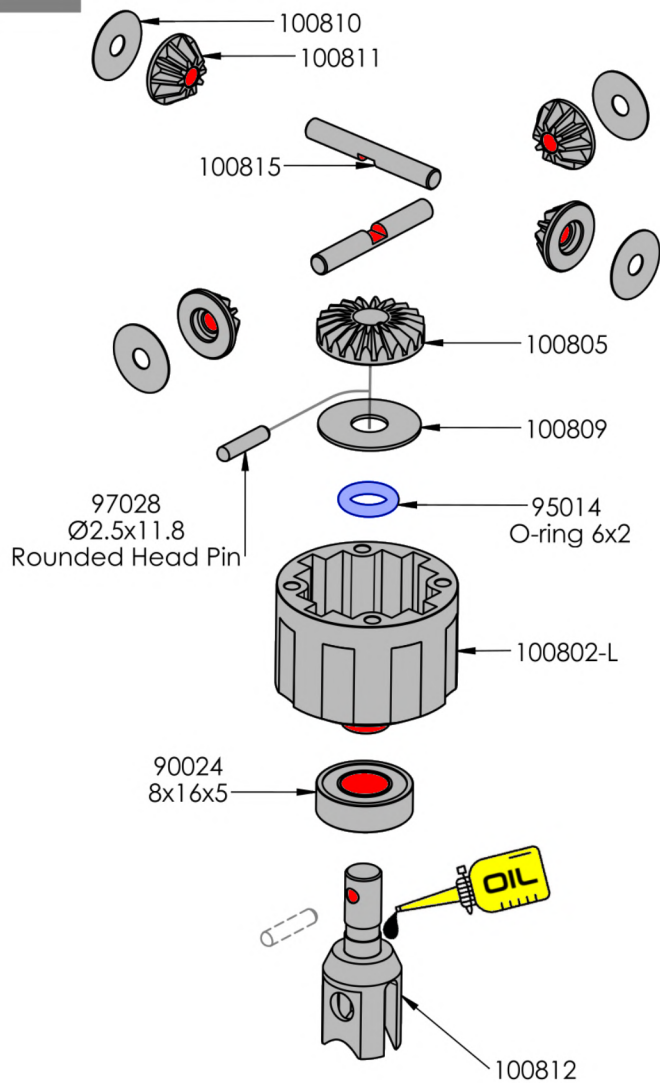


4



Front Diff. Gear

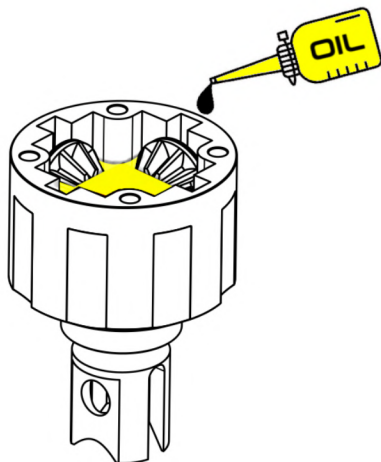
1



2

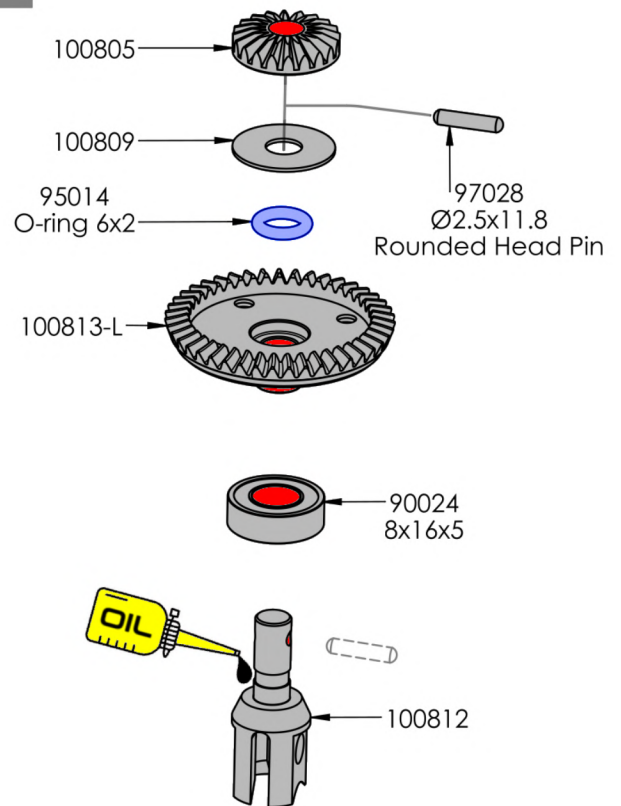
DIFFERENTIAL OIL :

Type: 5000 cst
Weight: 3g

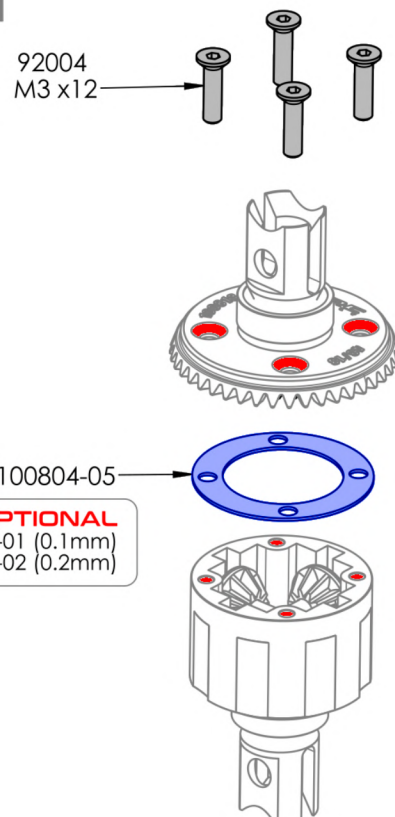


Fill the differential up to the top of the pin. **DO NOT** fill the diff. to the top of the housing.

3



4

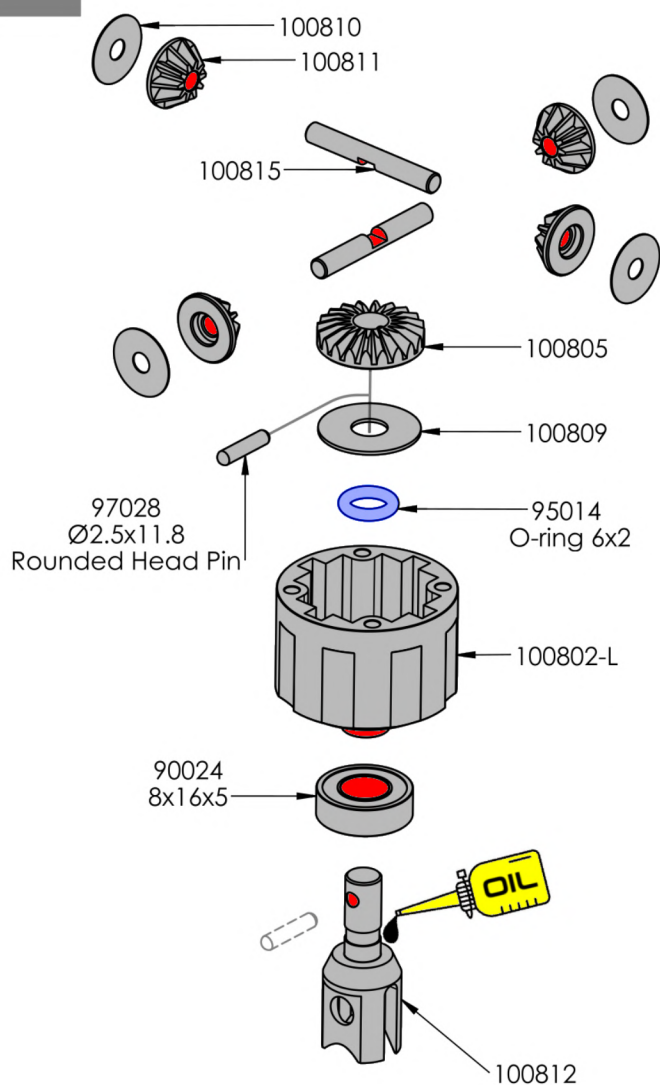


OPTIONAL

100804-01 (0.1mm)
100804-02 (0.2mm)

Rear Diff. Gear

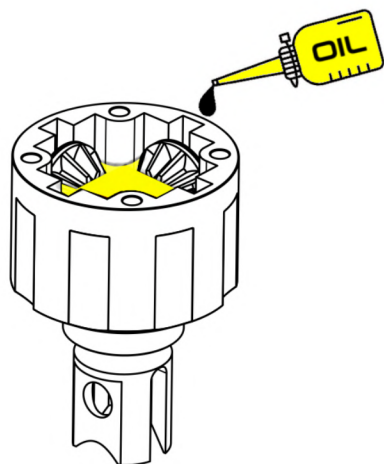
1



2

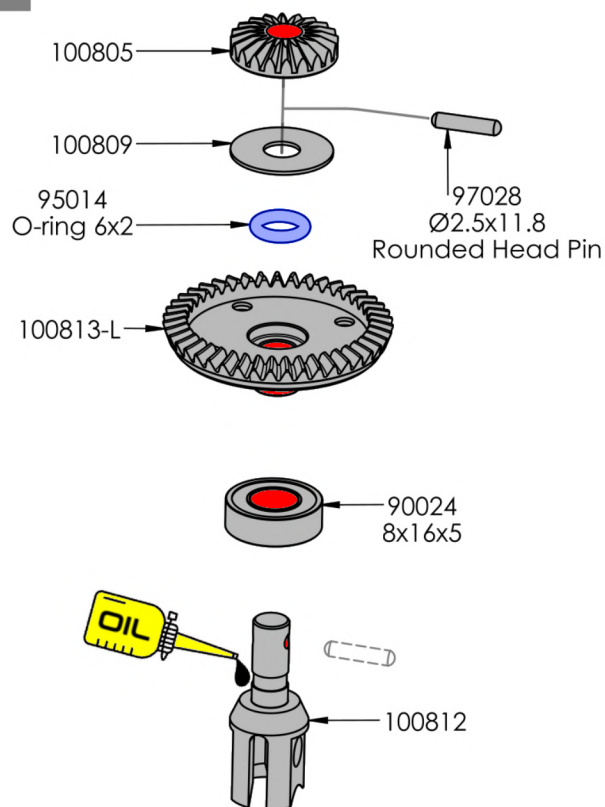
DIFFERENTIAL OIL :

Type: 5000 cst
Weight: 3g

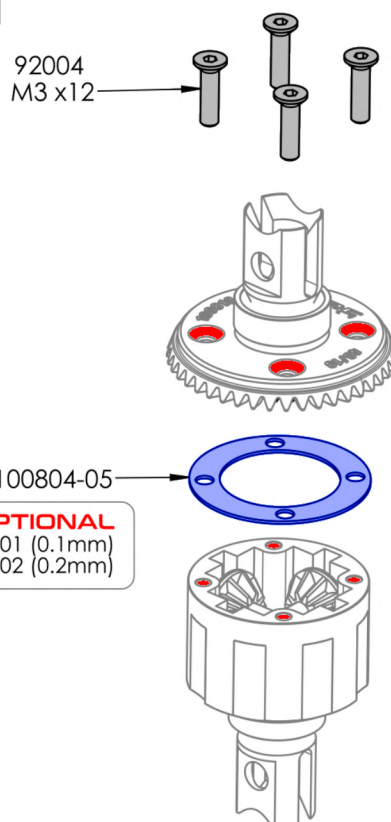


Fill the differential up to the top of the pin. **DO NOT** fill the diff. to the top of the housing.

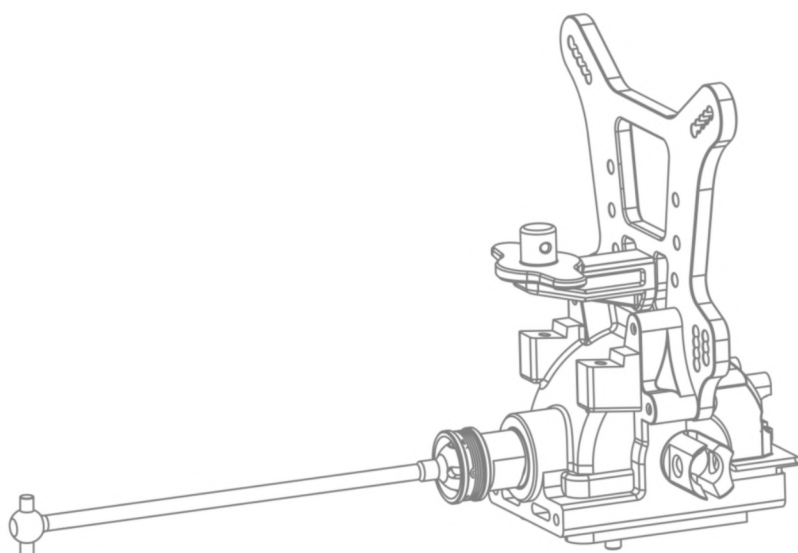
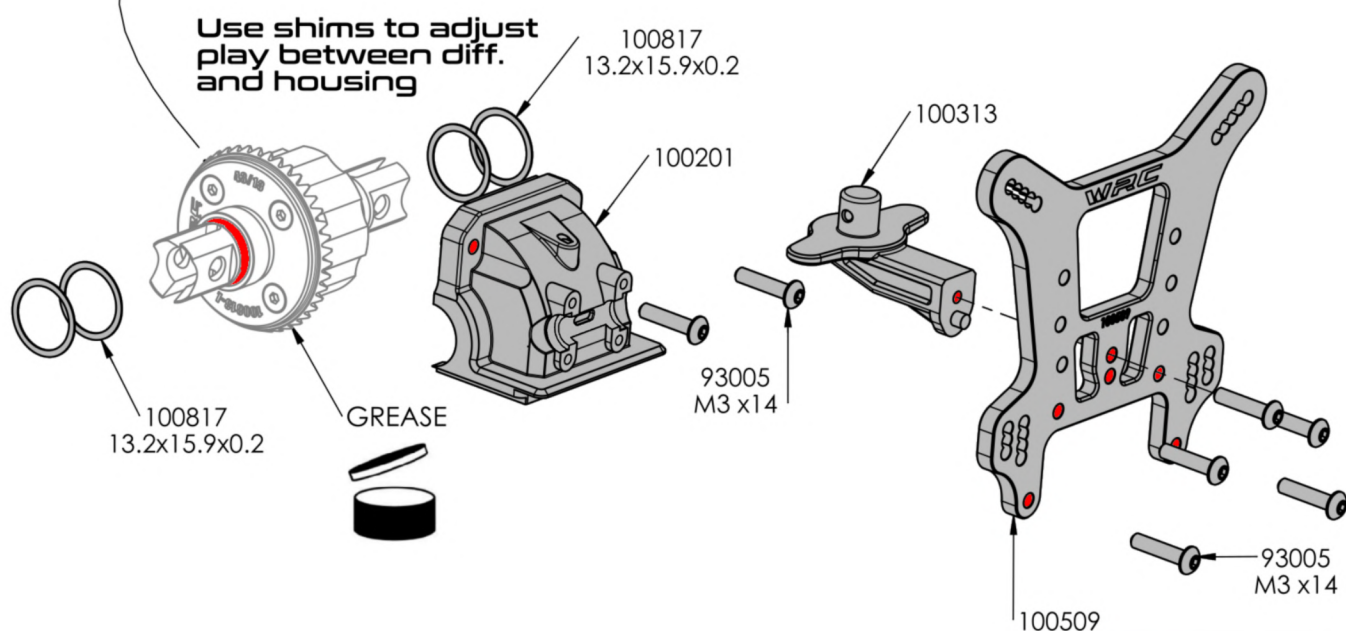
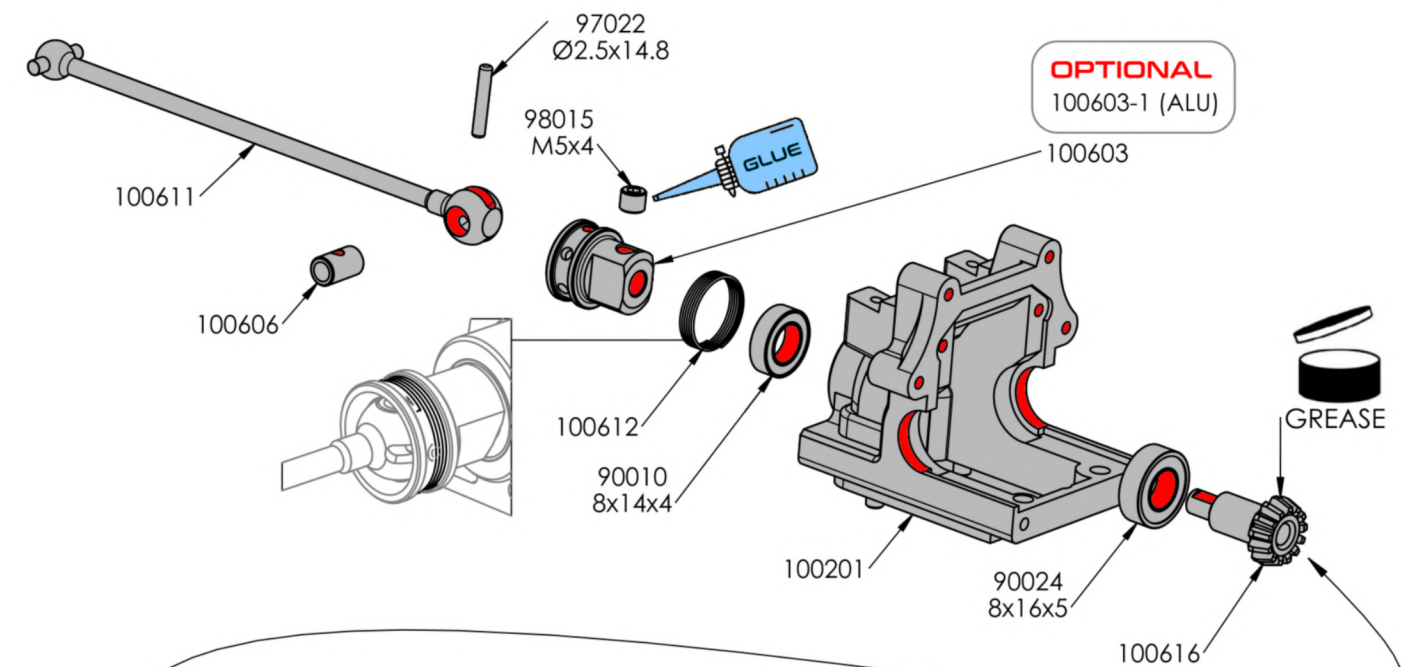
3

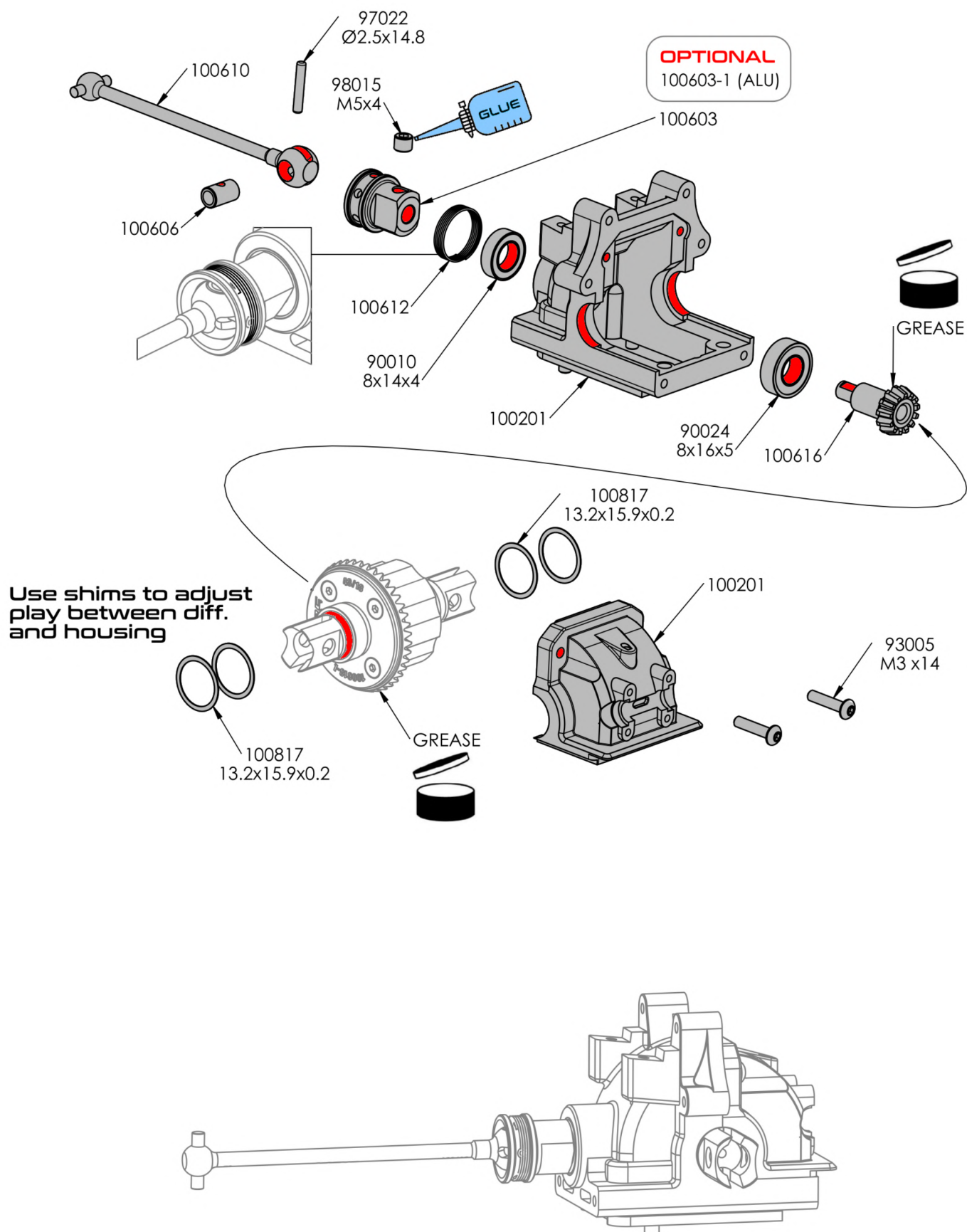


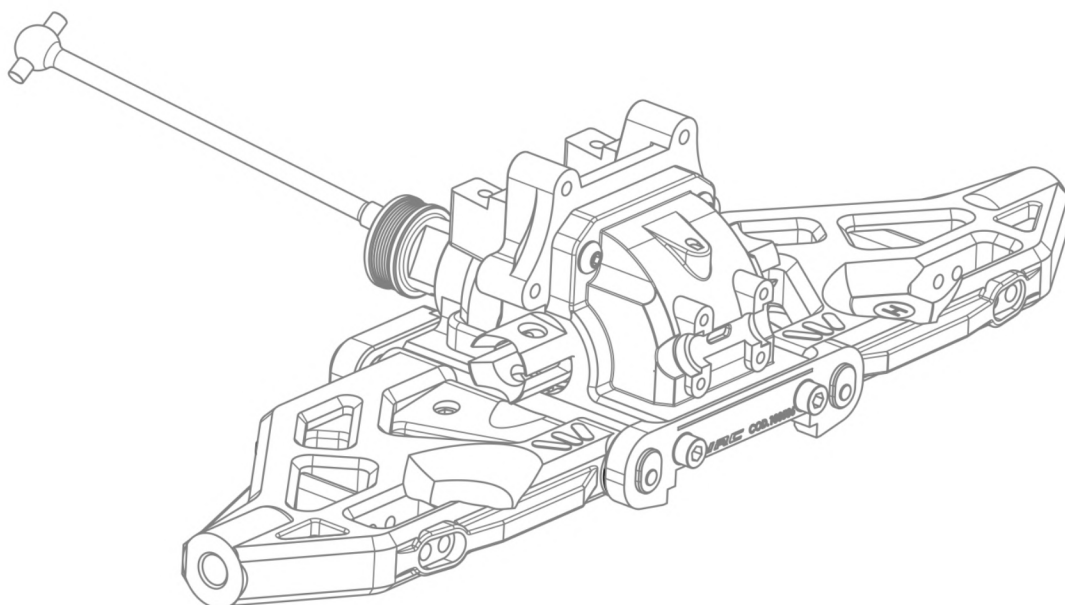
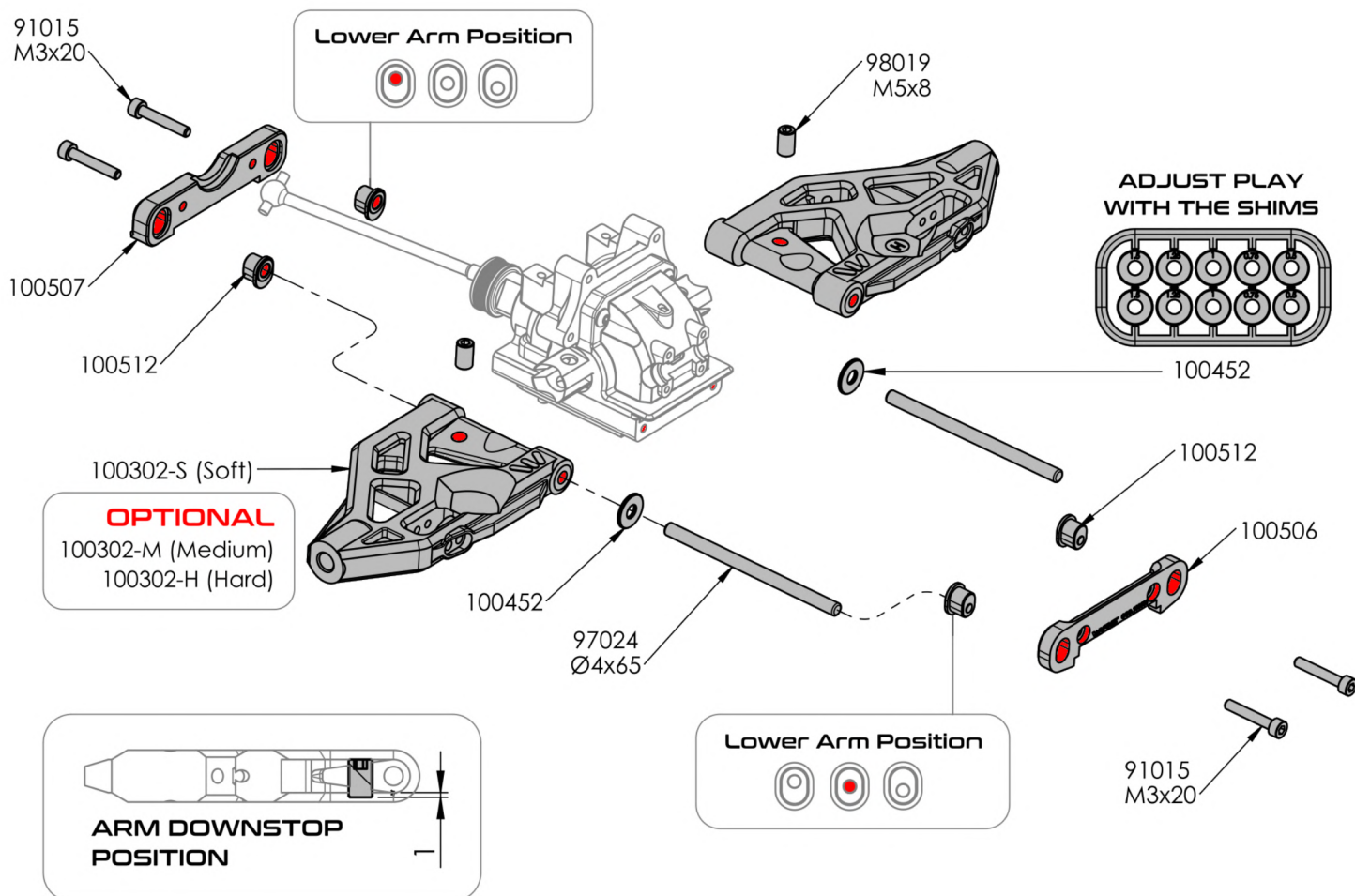
4

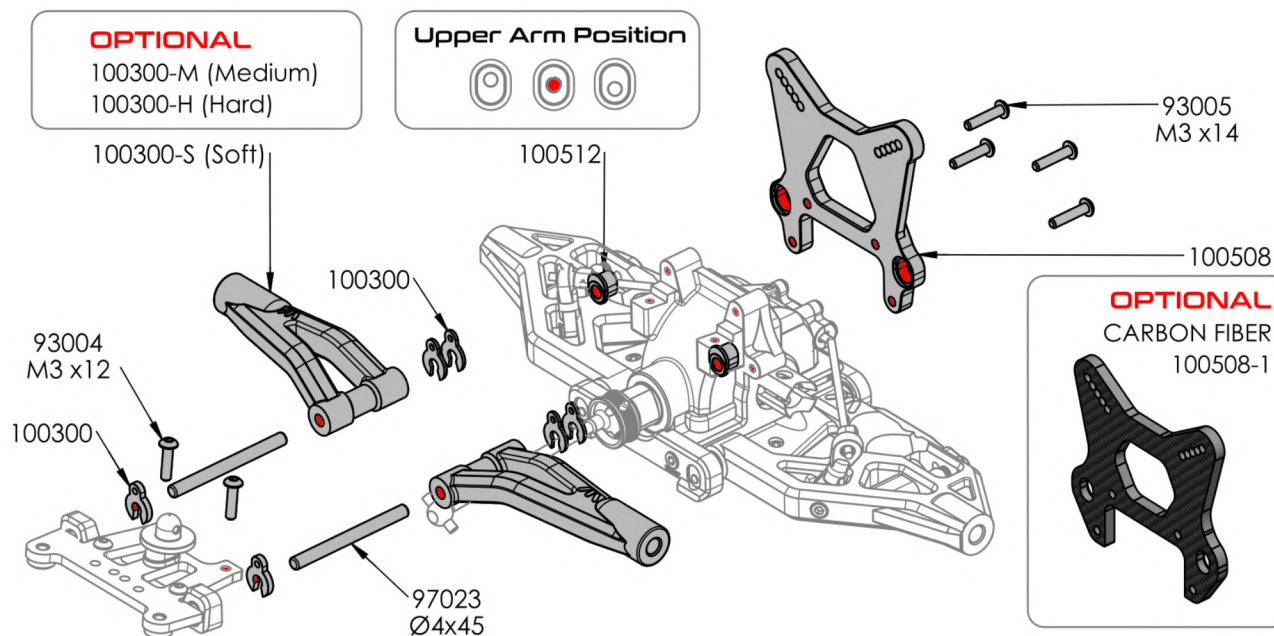
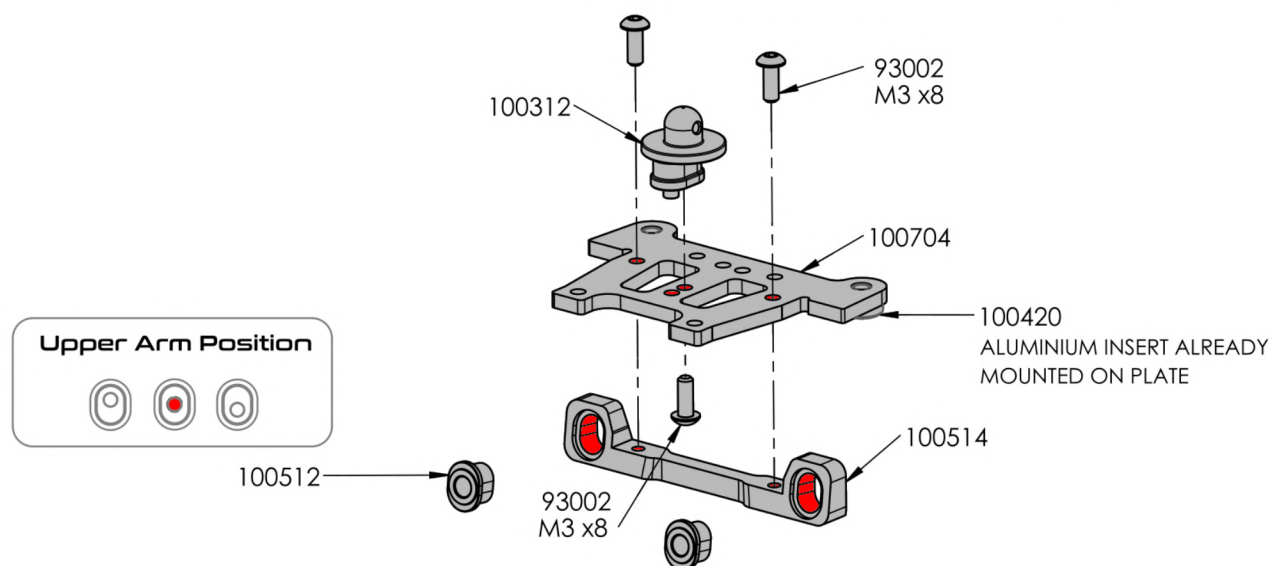
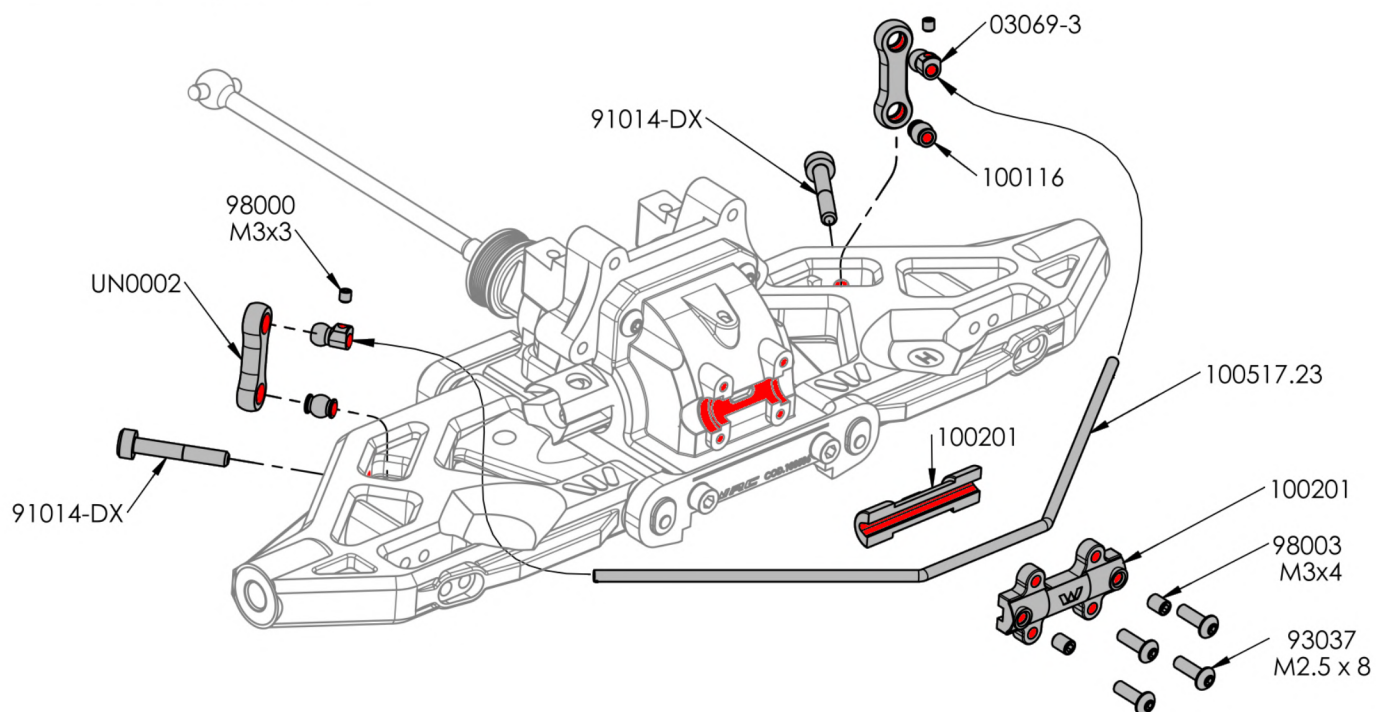


Rear Transmission

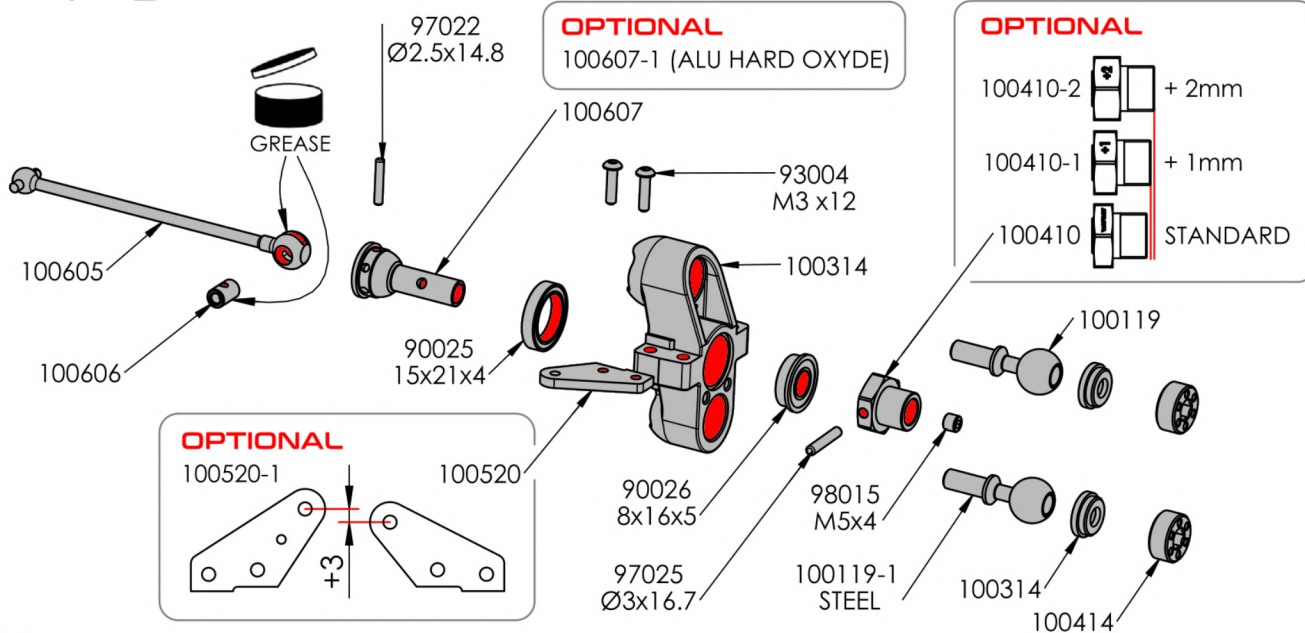






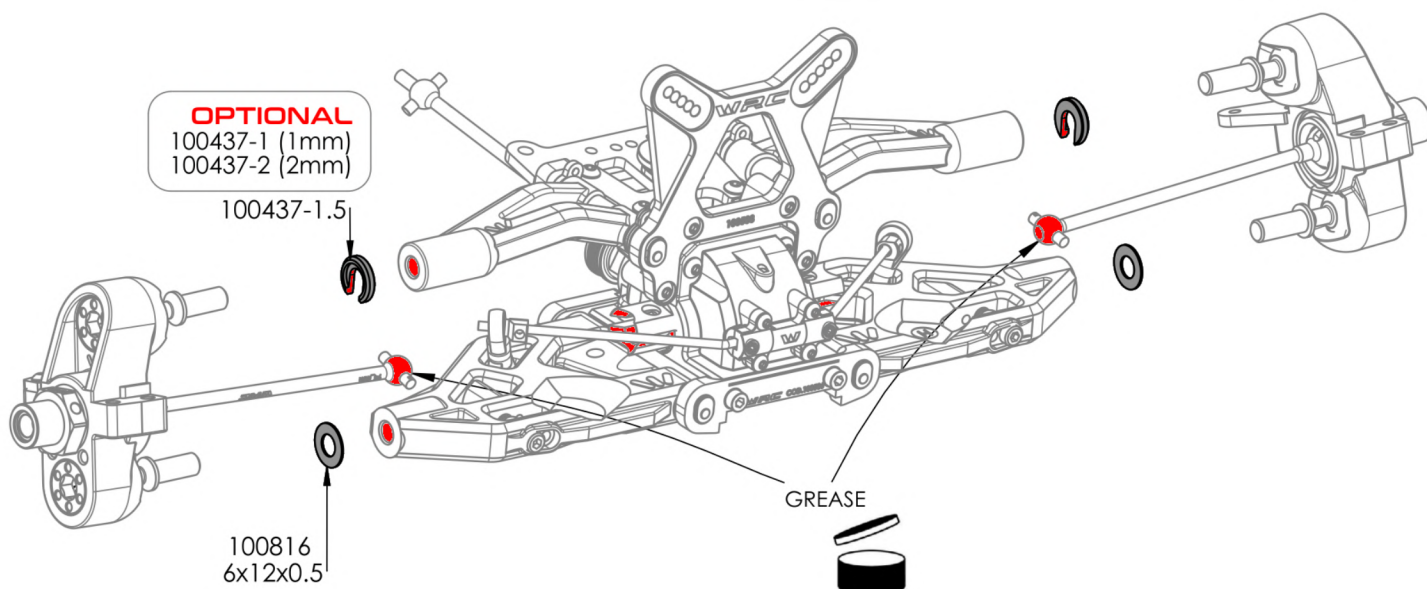
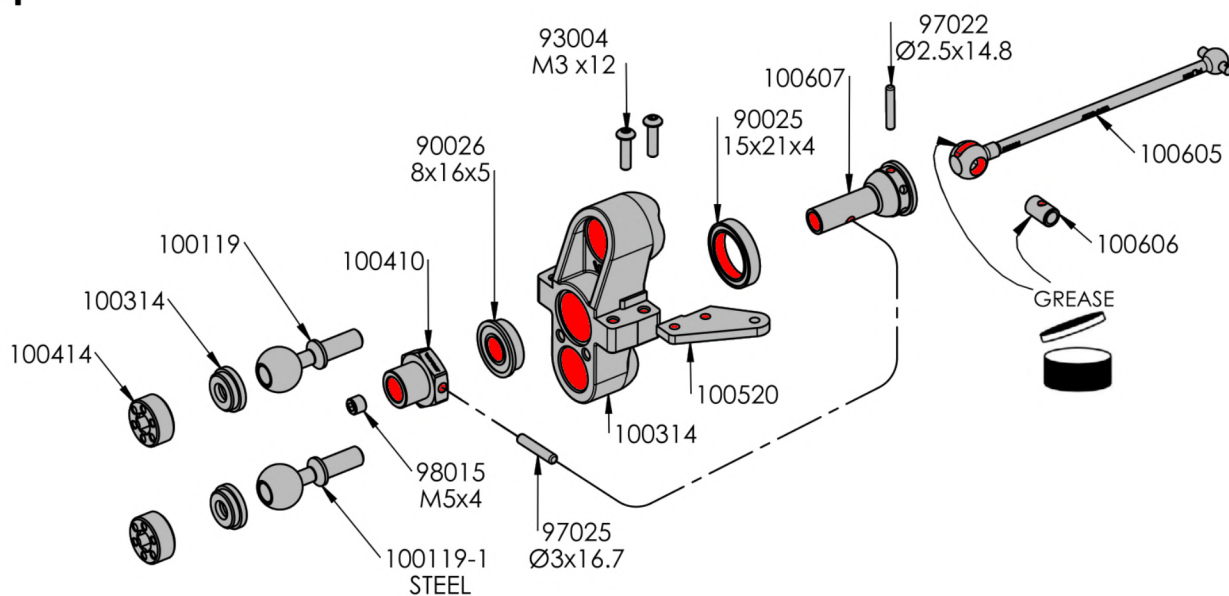


Front Upright

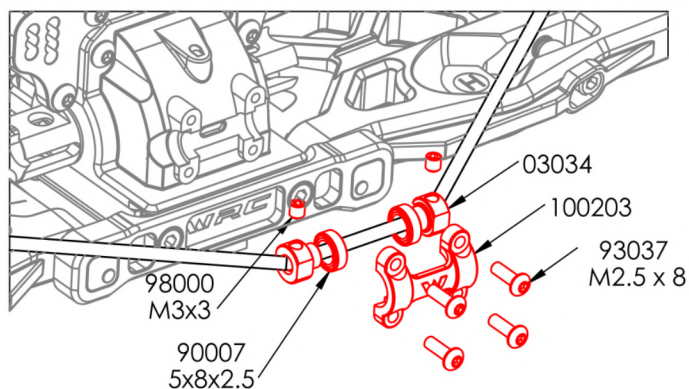
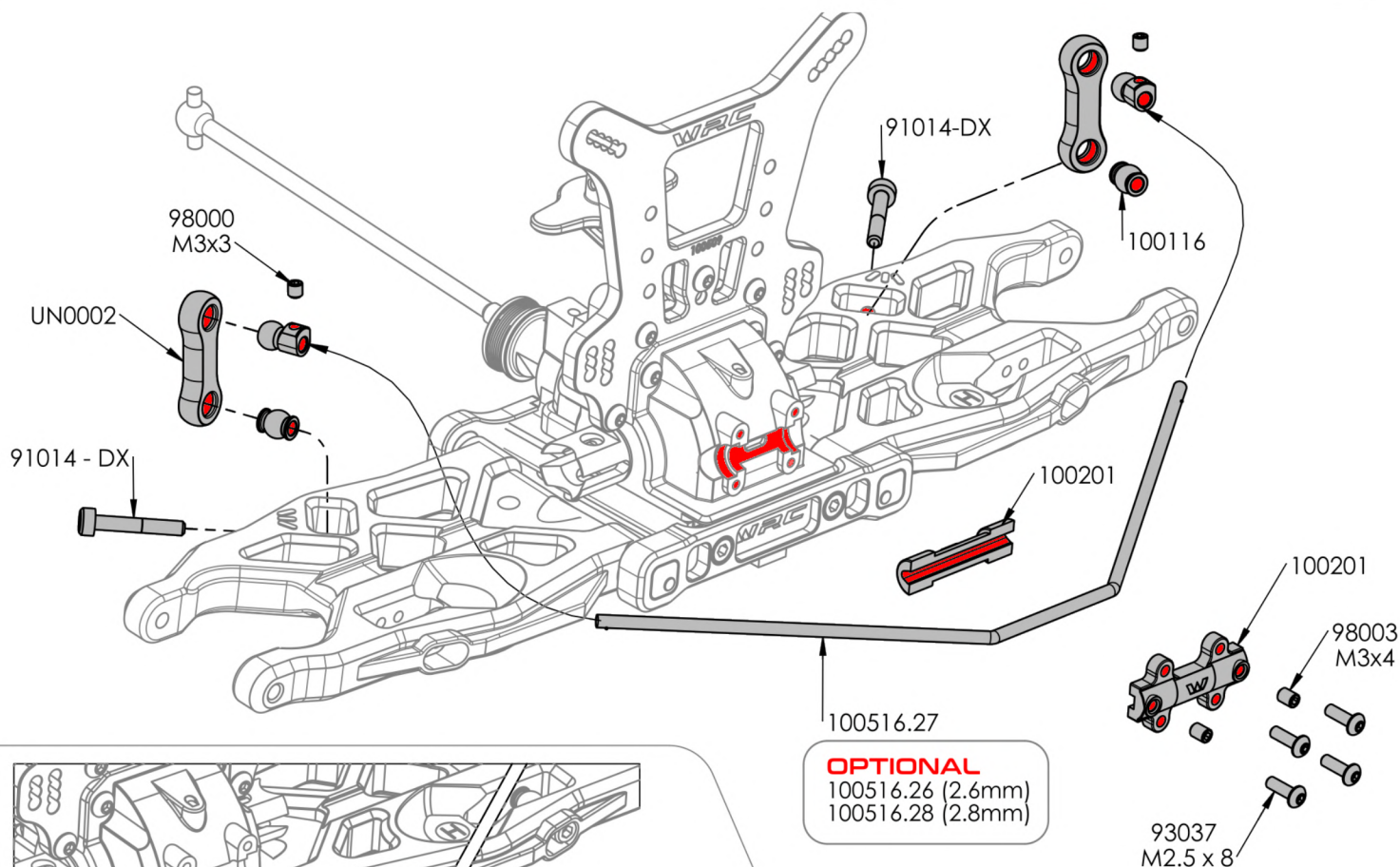
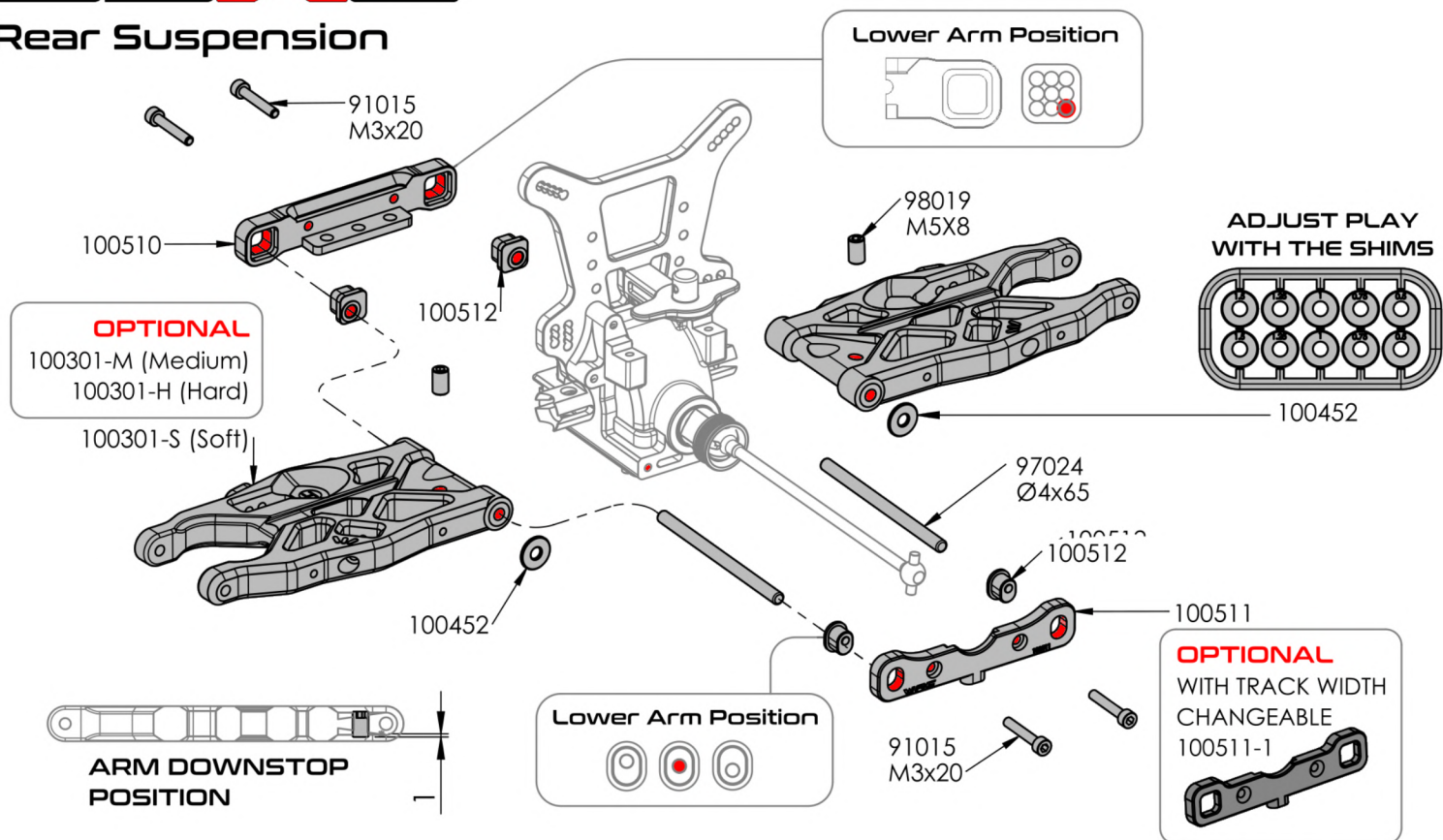


RIGHT

LEFT

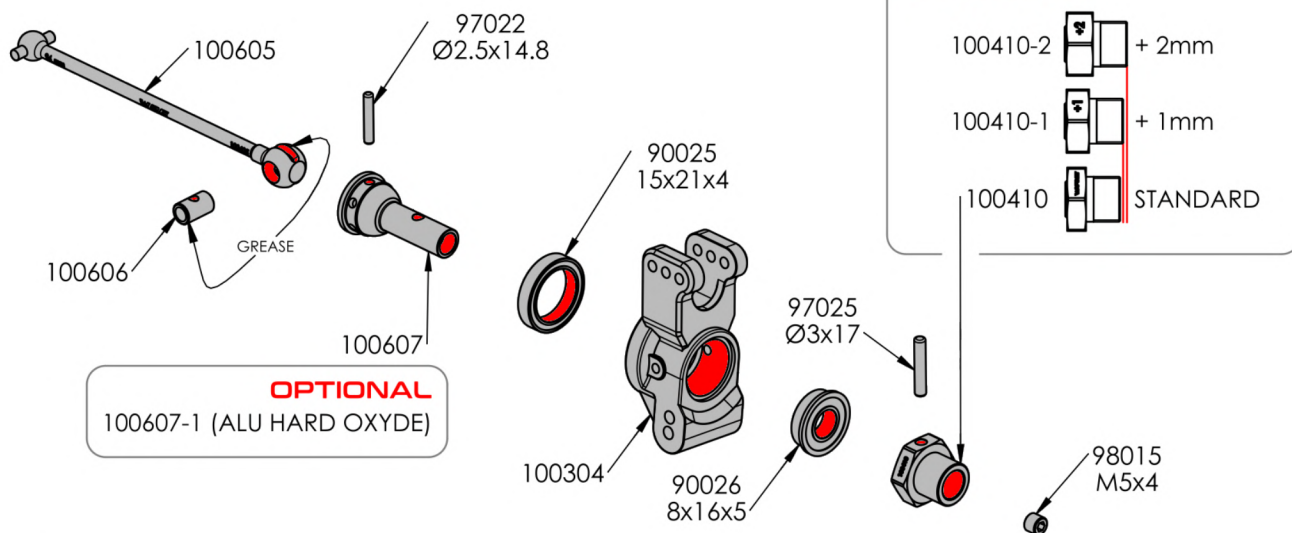


Rear Suspension



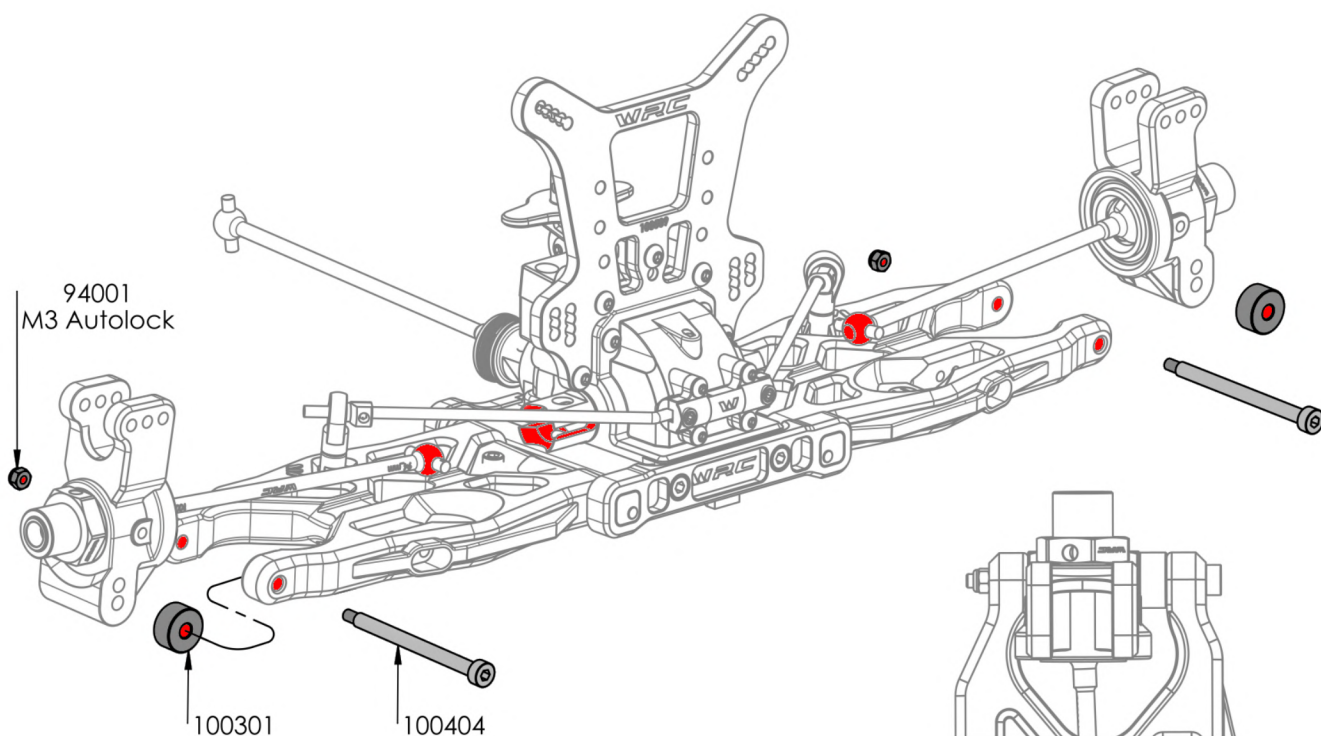
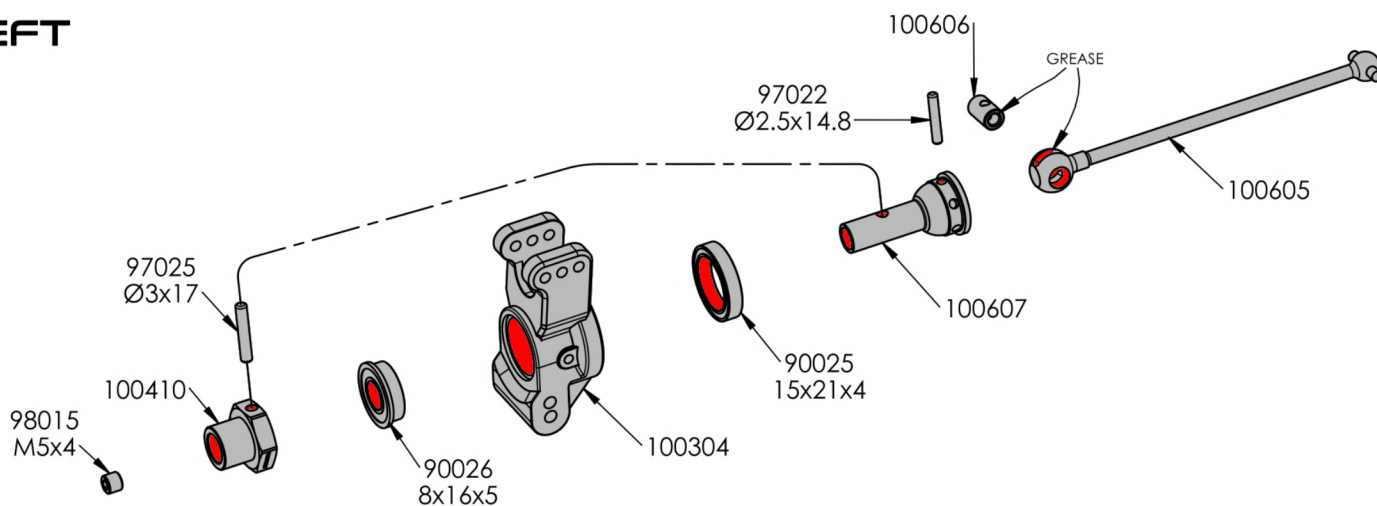
OPTIONAL
Bearing Mounted Anti roll-bar Kit
Front and Rear

Rear Suspension

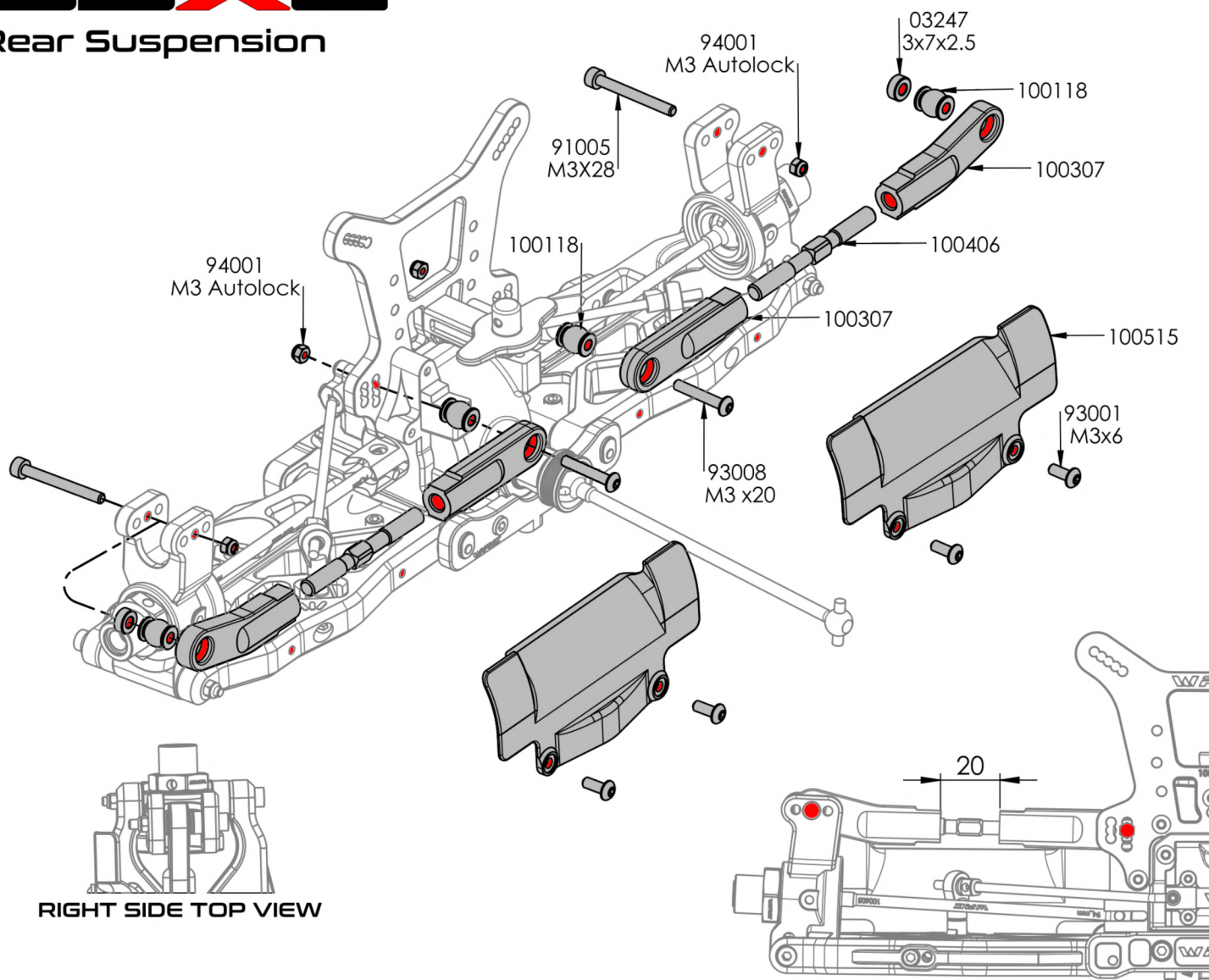


RIGHT

LEFT

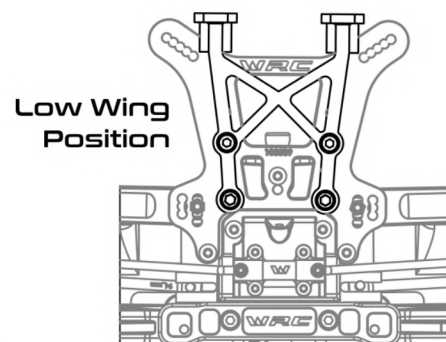
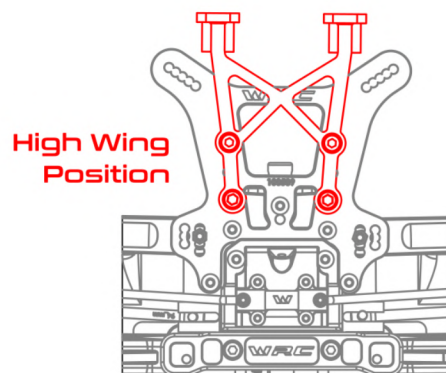
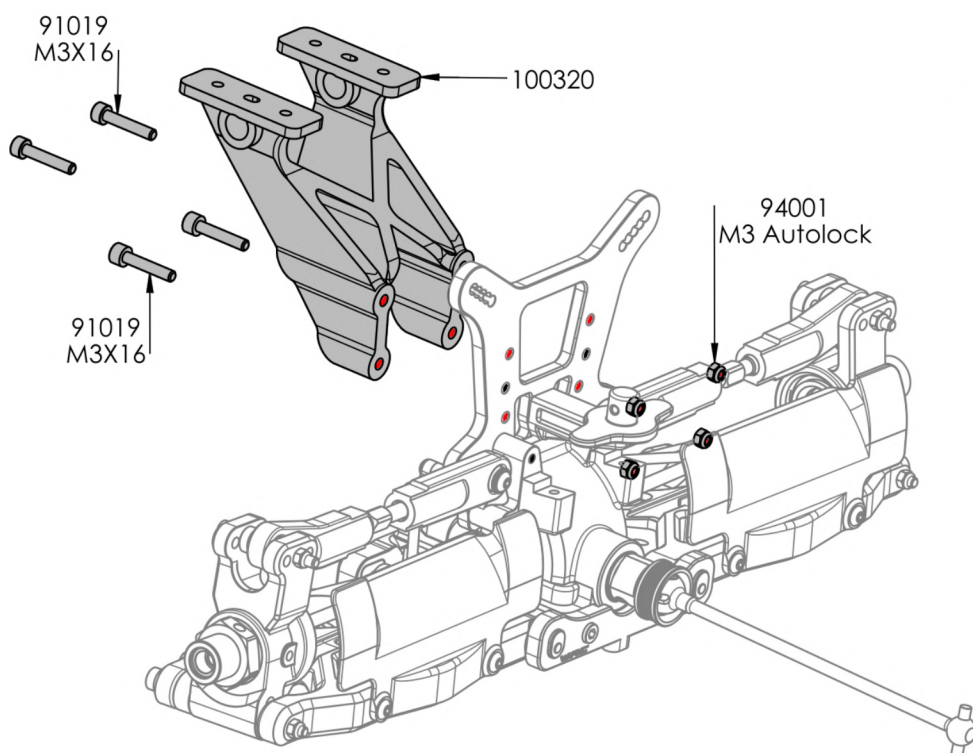


RIGHT SIDE TOP VIEW

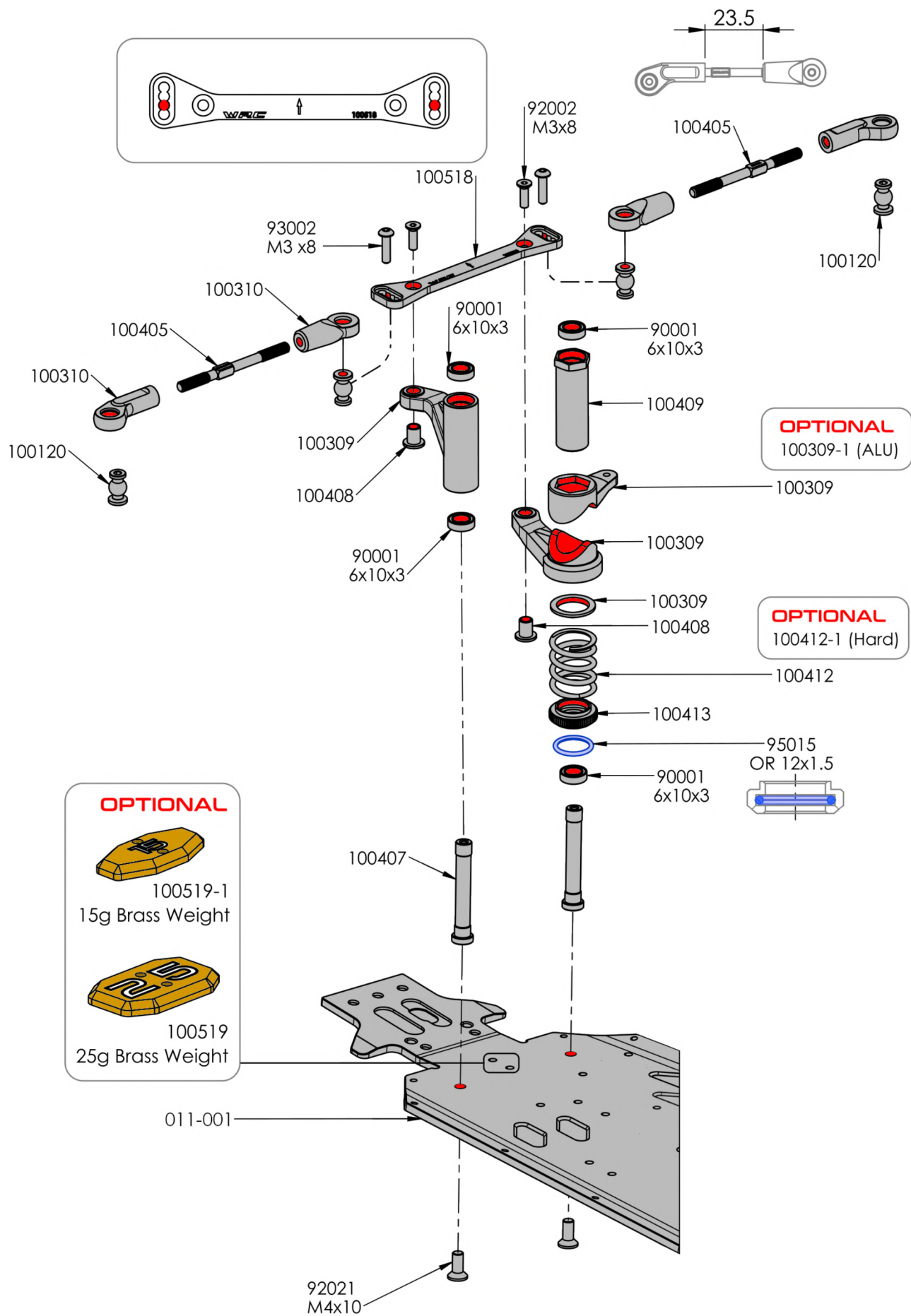


RIGHT SIDE TOP VIEW

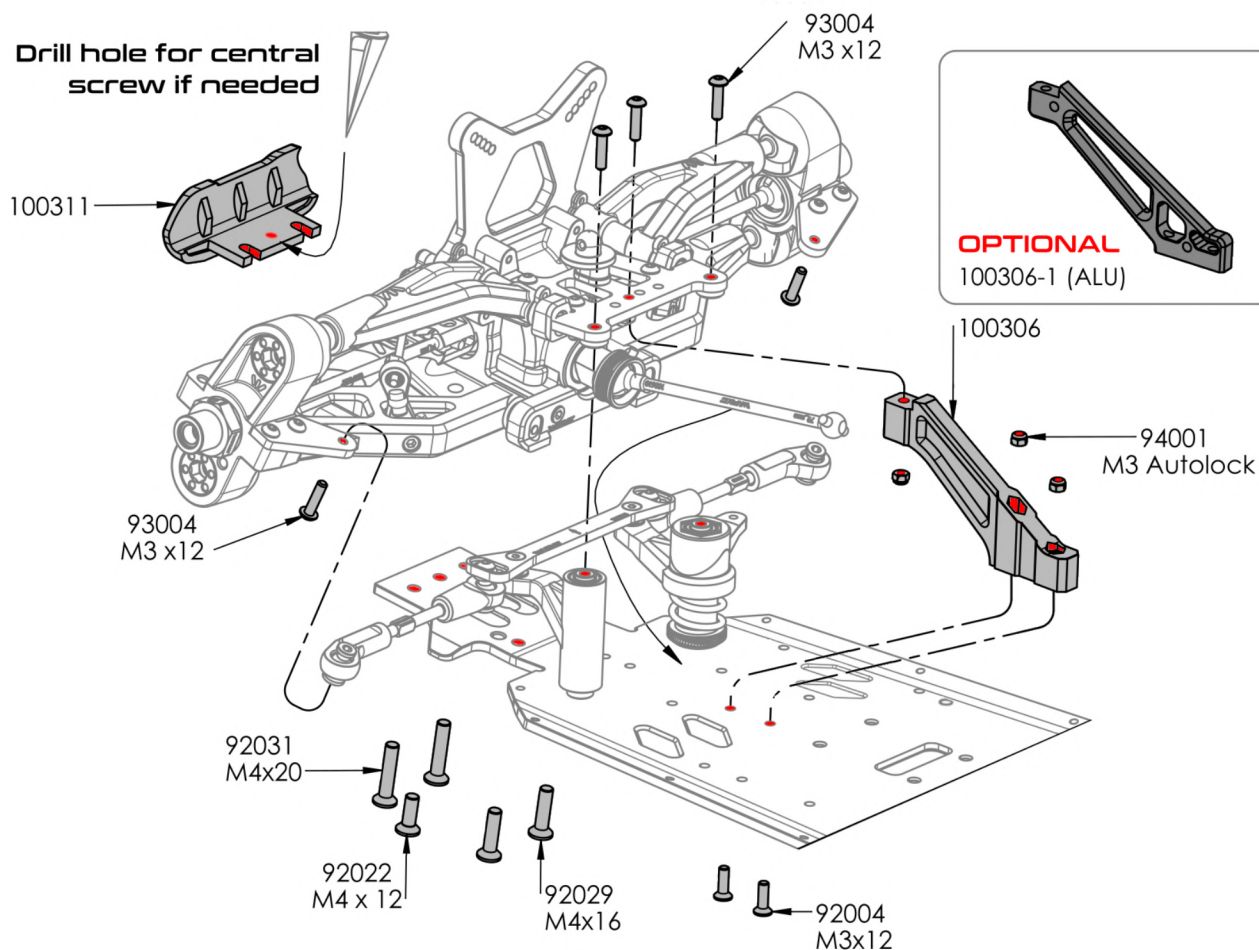
Rear Wing Support



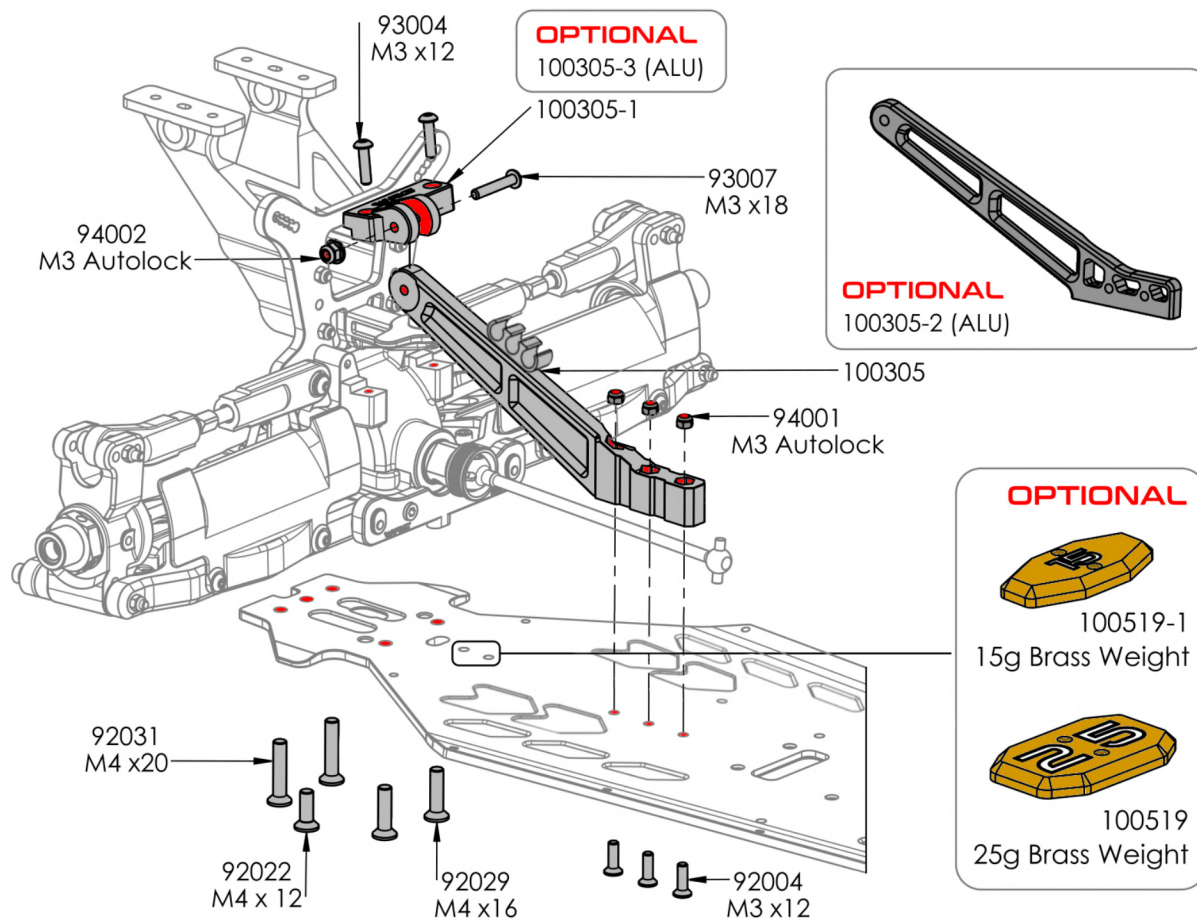
Front Assembly

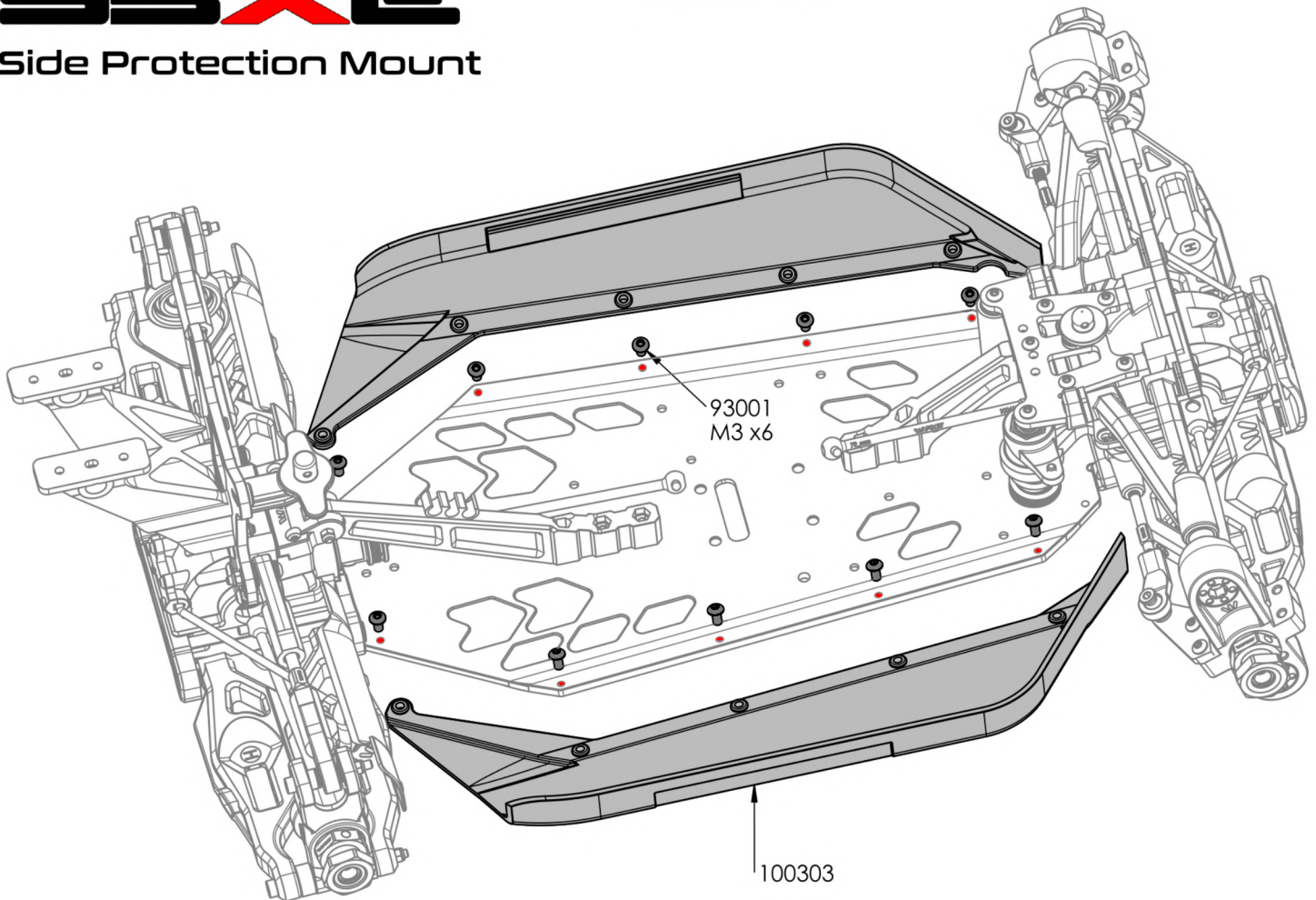
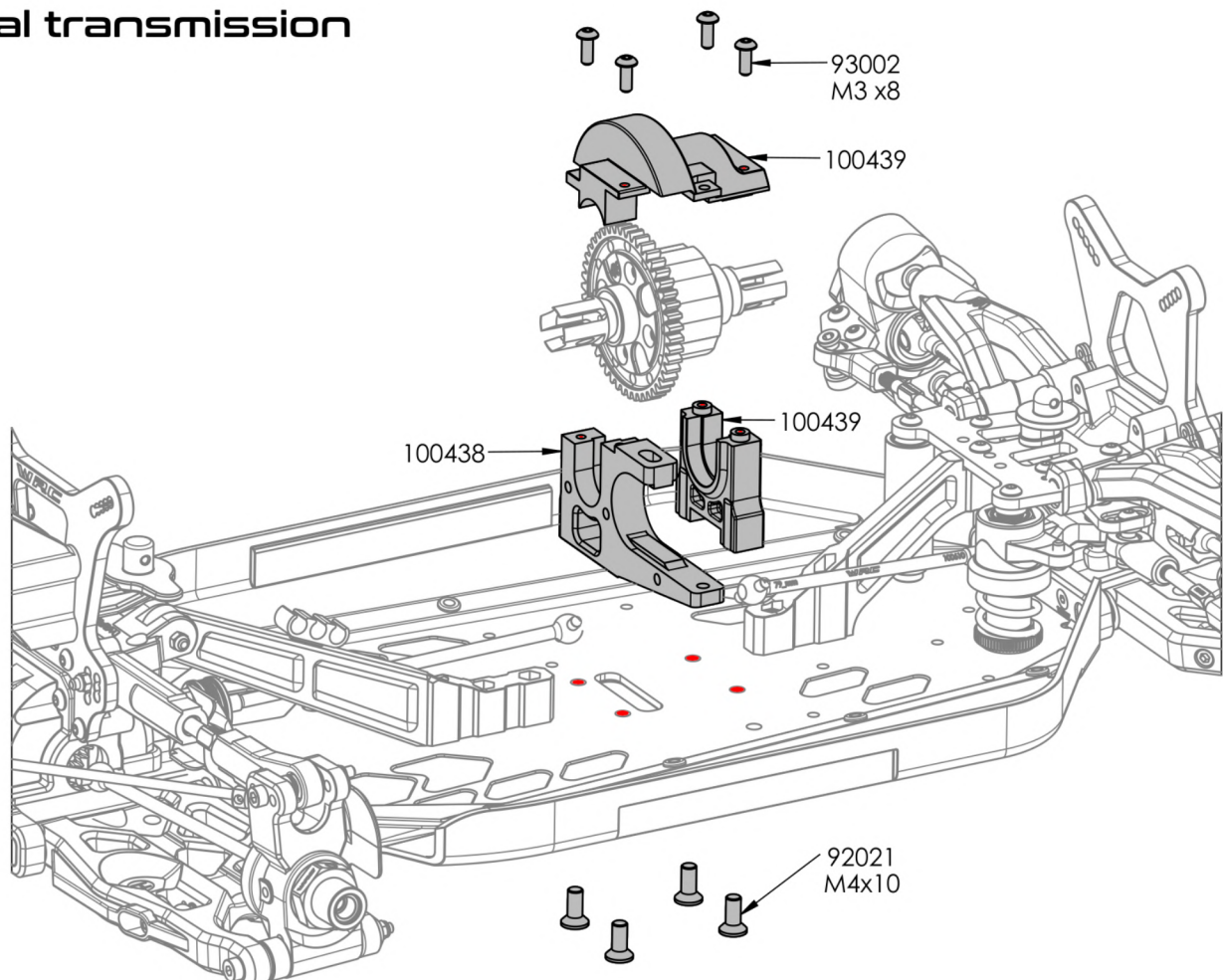


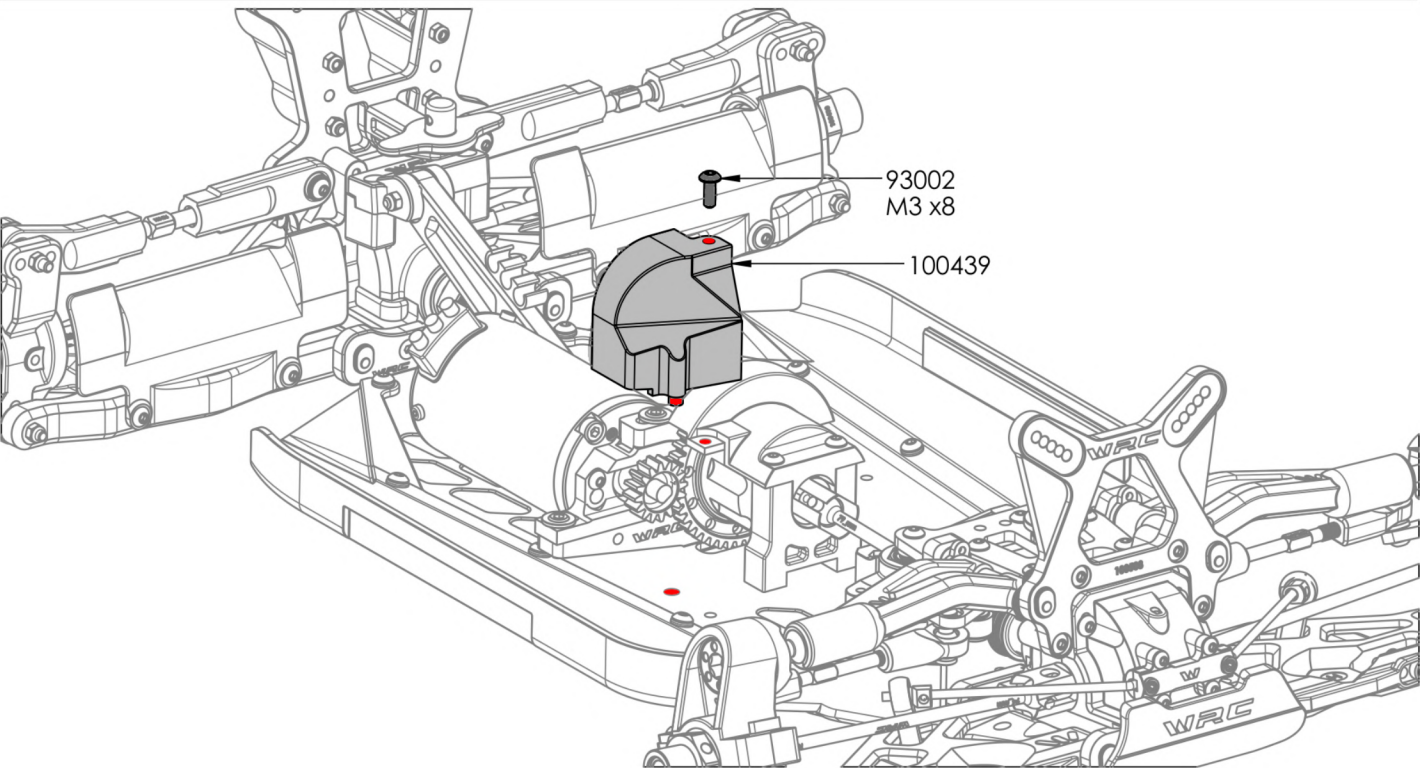
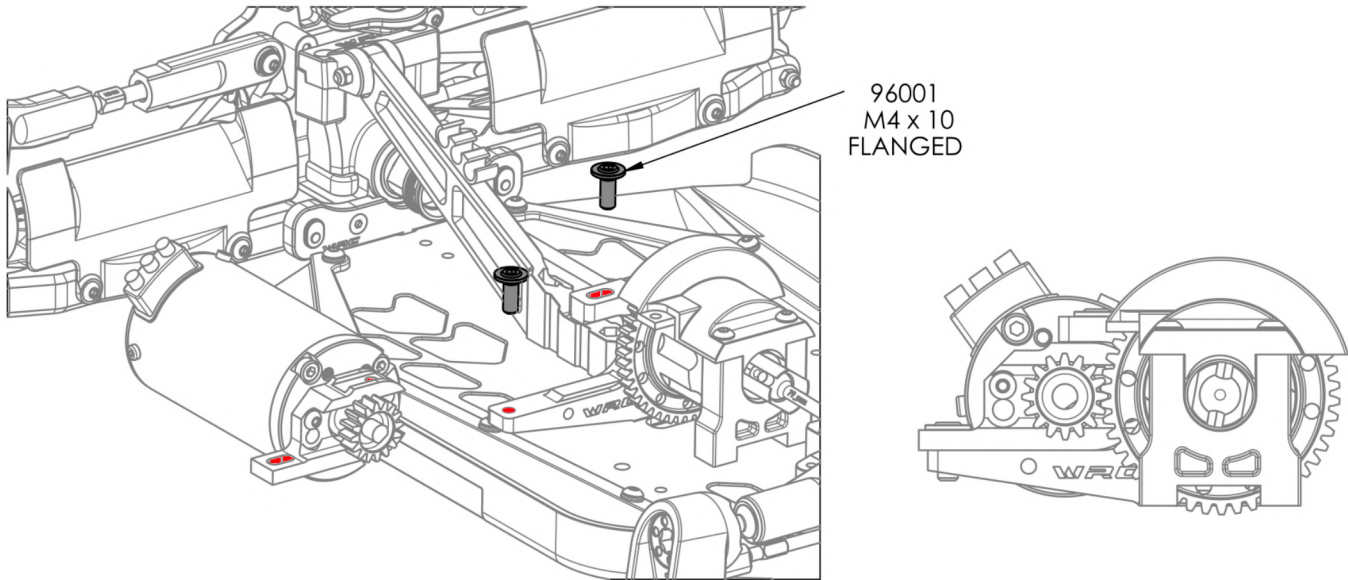
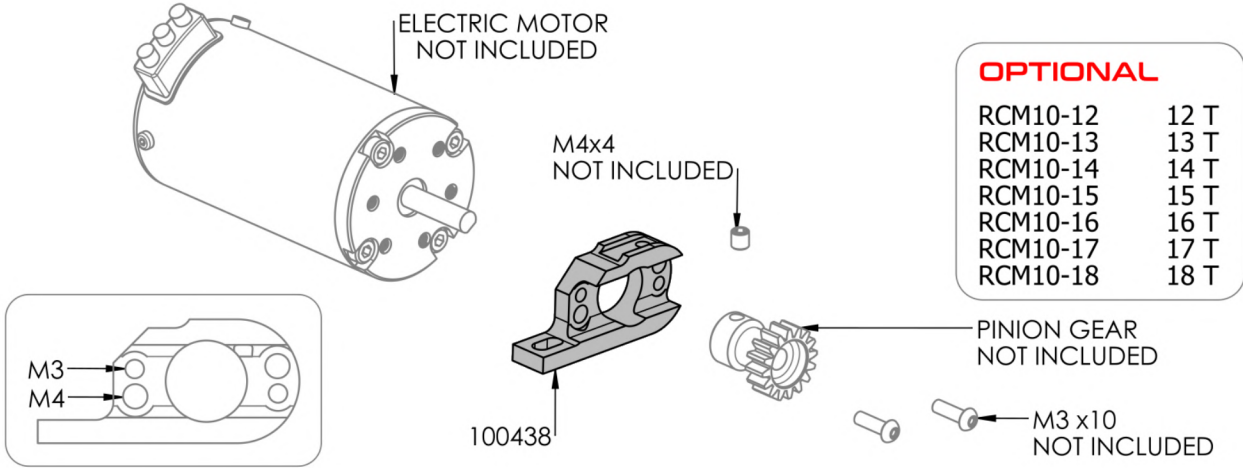
Front Assembly



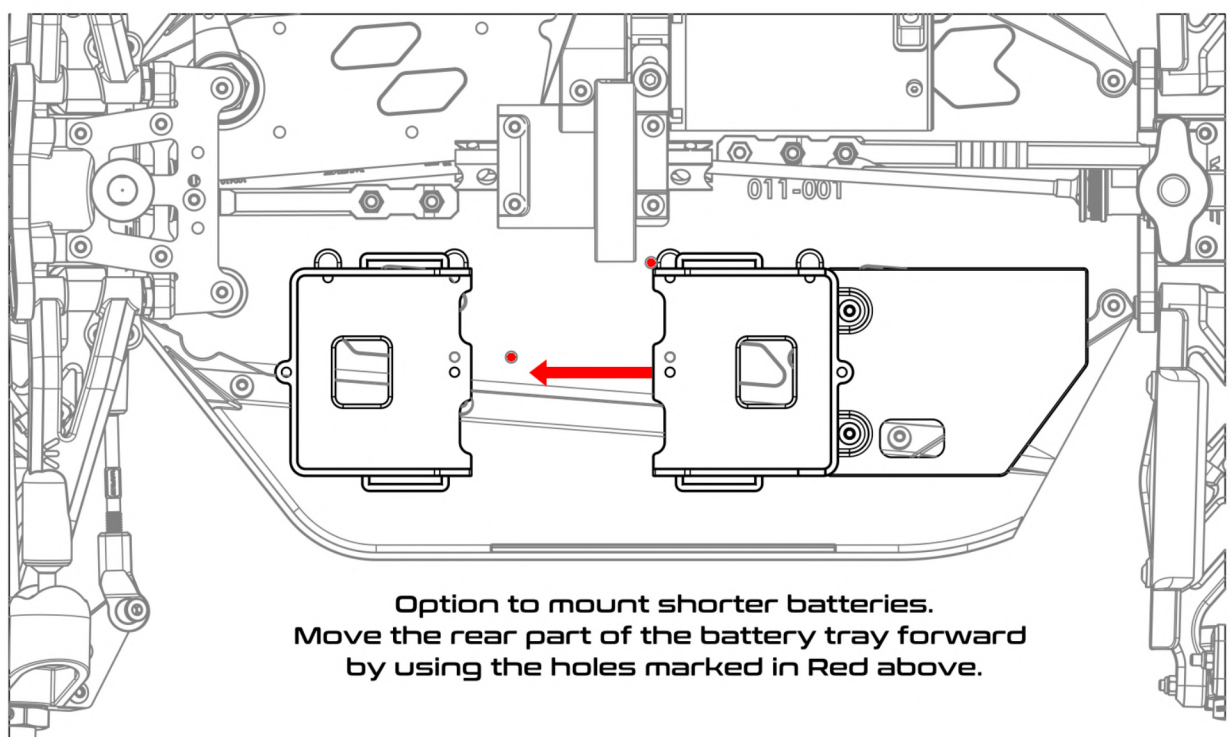
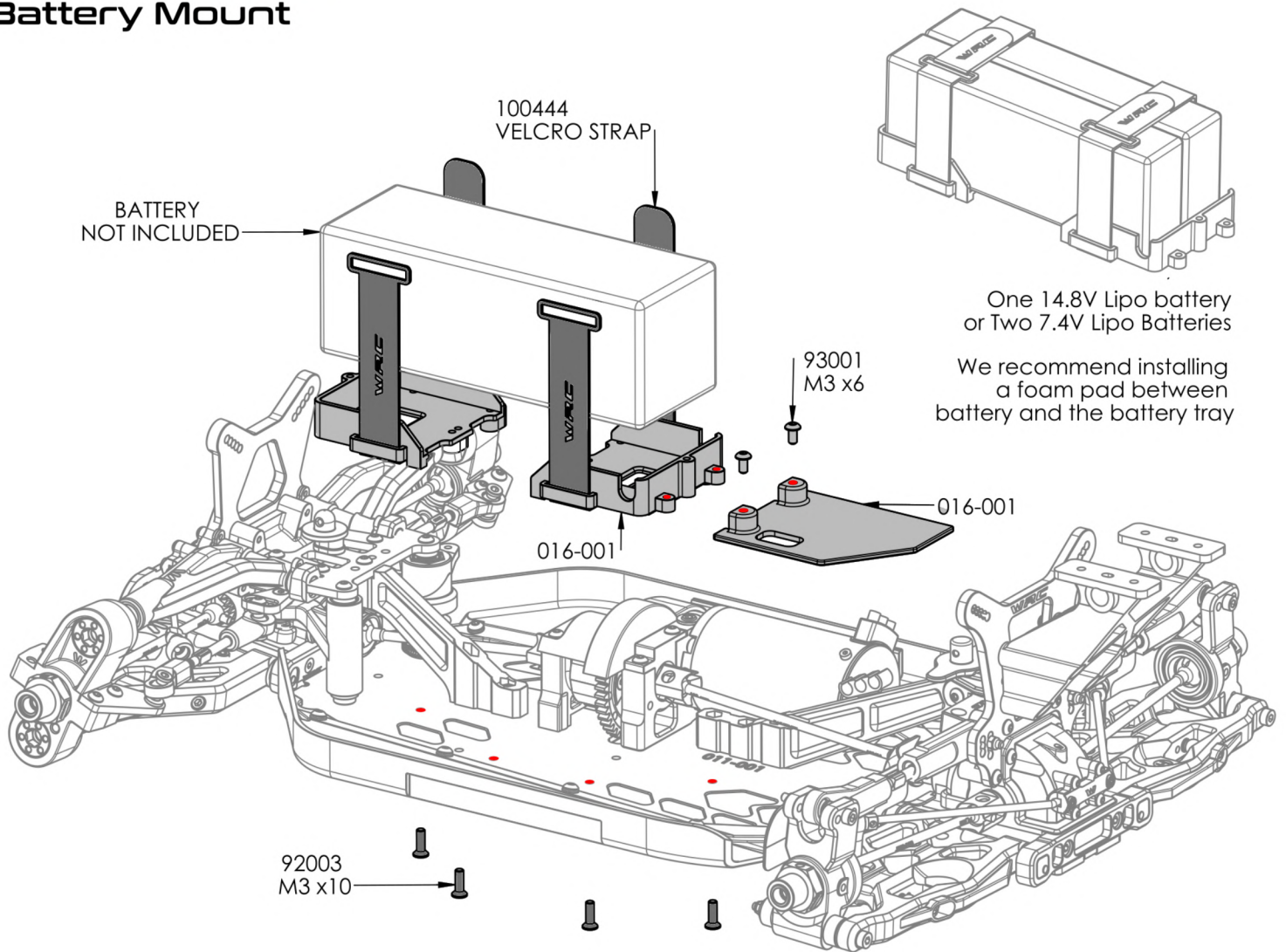
Rear Assembly



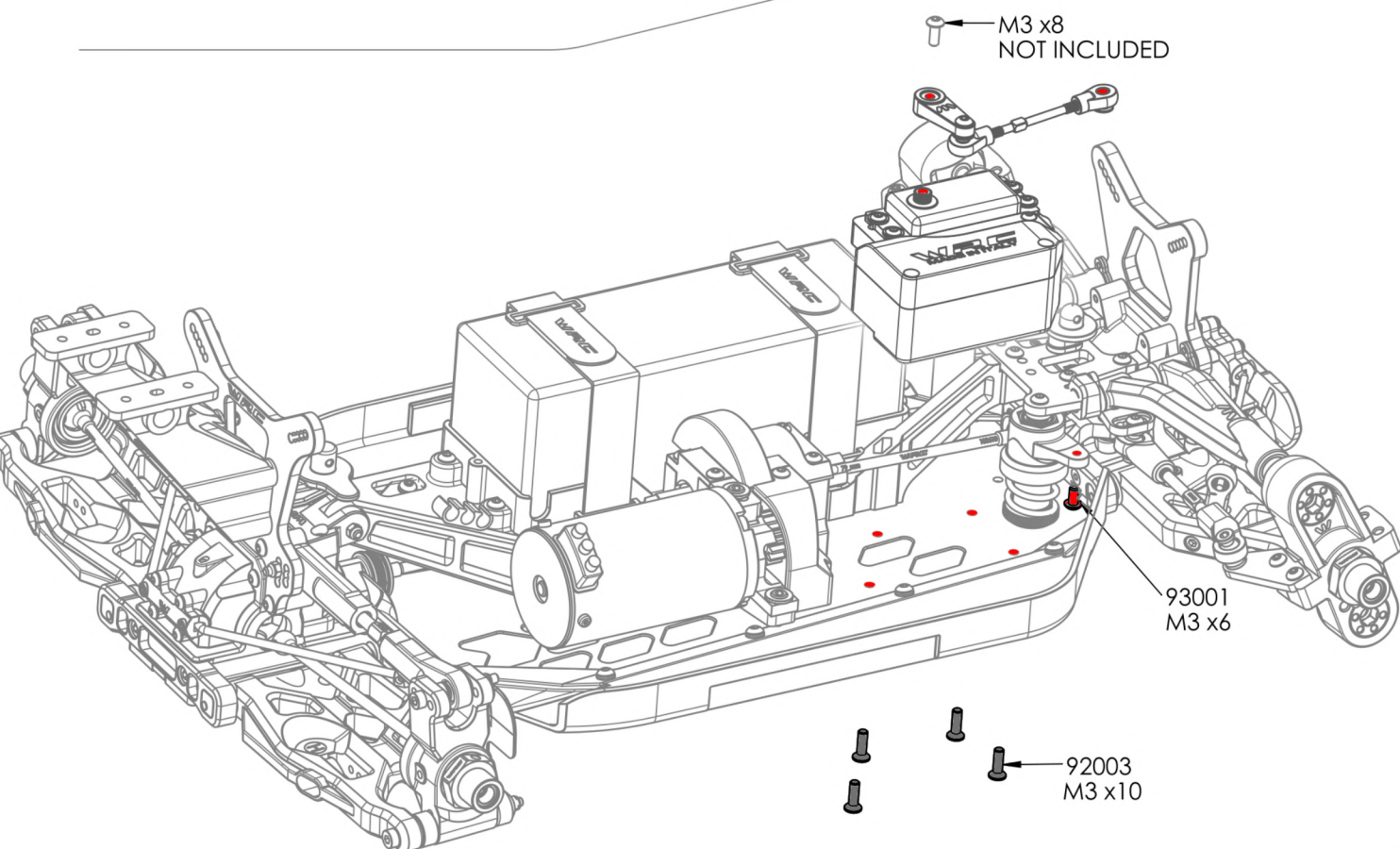
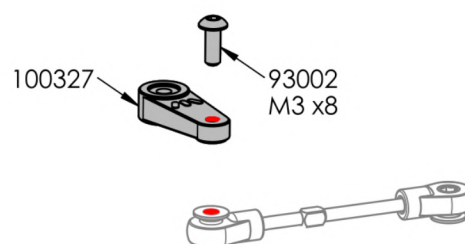
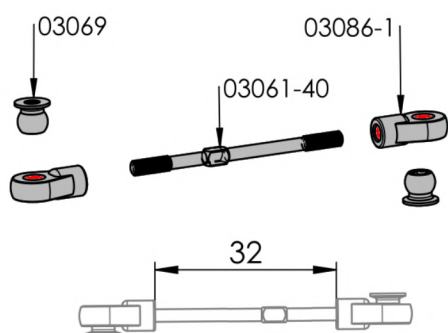
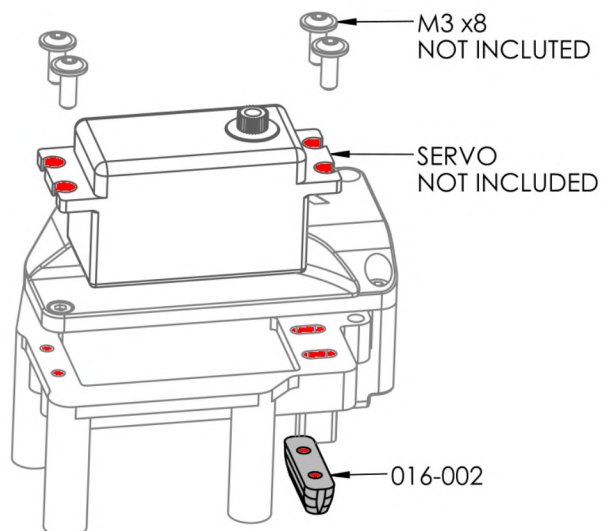
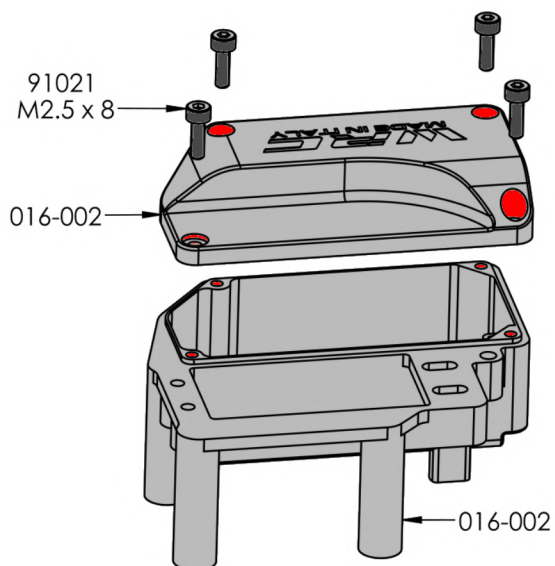
Side Protection Mount**Central transmission**



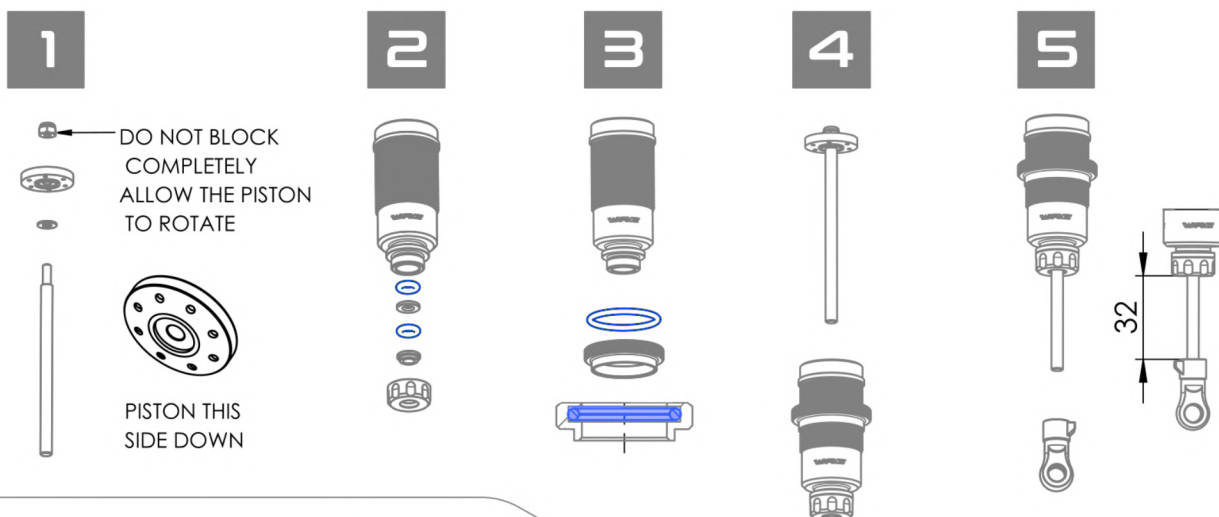
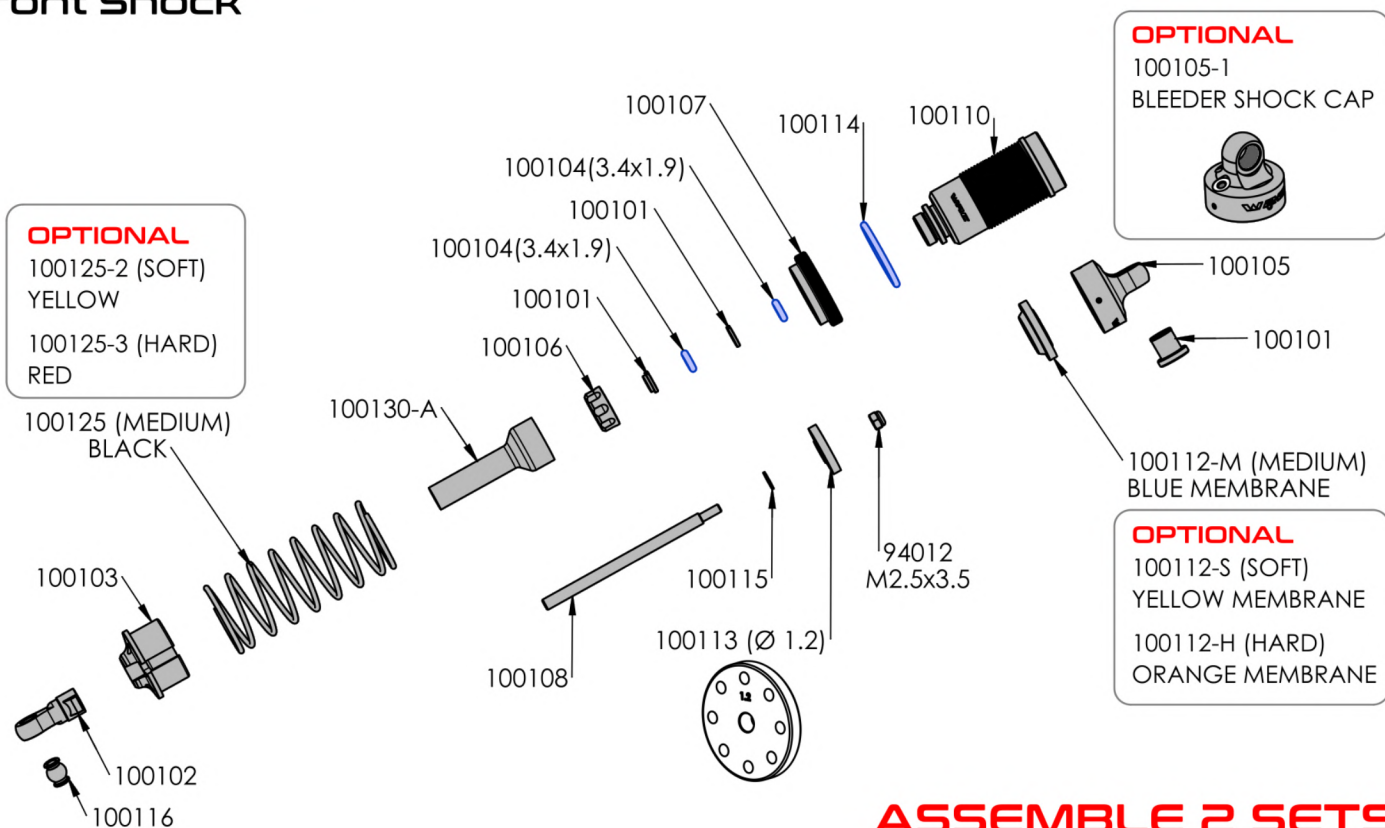
Battery Mount



Radio Case



Front Shock



6



SHOCK FILLING

Fully extend the piston rod so the piston is at the bottom of the shock body.

Hold the shock upright and fill the shock body with shock oil as in the picture.

Let the oil settle and allow air bubbles to rise to the top. Slowly move the piston up and down until no more air bubbles appear. Add shock oil as necessary.

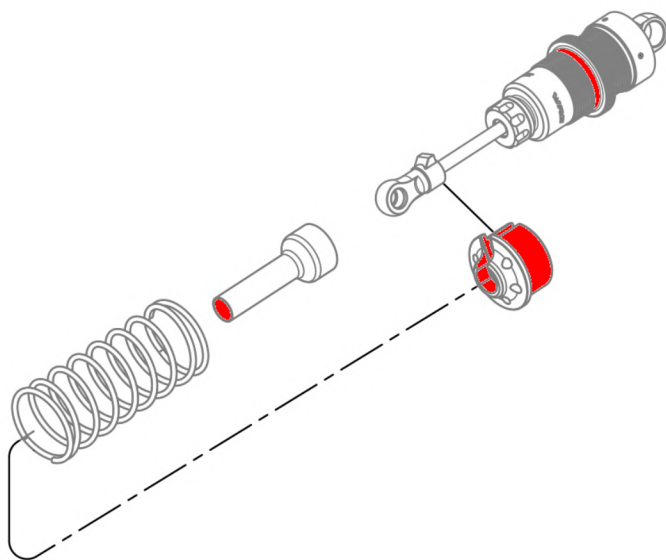
Pull the piston rod most of the way out of the shock bod. Let the shock rest for 5 minutes to allow the air bubbles to scape.

P- ONE SHOCKS OIL

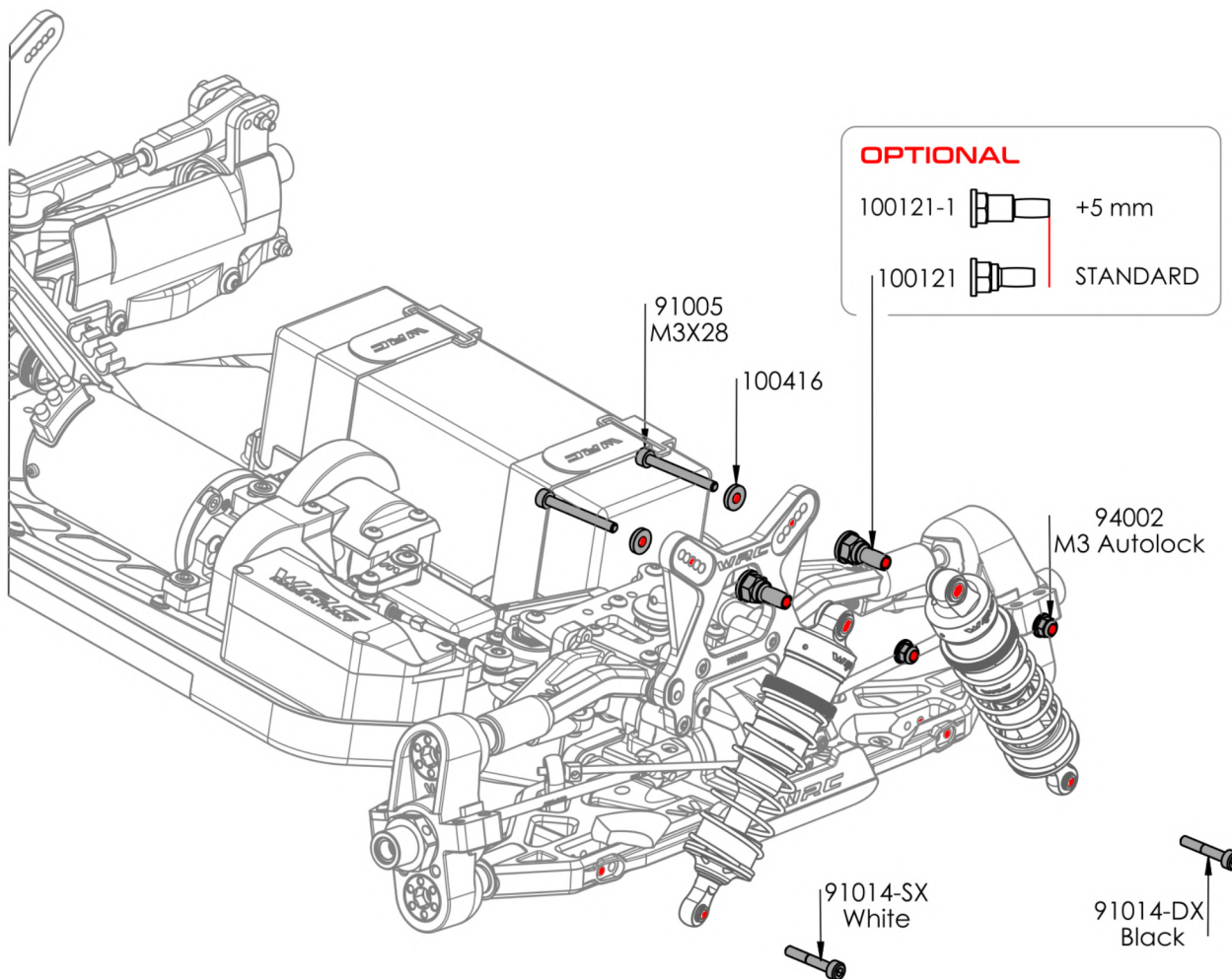
CODE	CST
SO-400	400
SO-500	500
SO-600	600 (IN KIT)
SO-700	700
SO-800	800

Front Shock

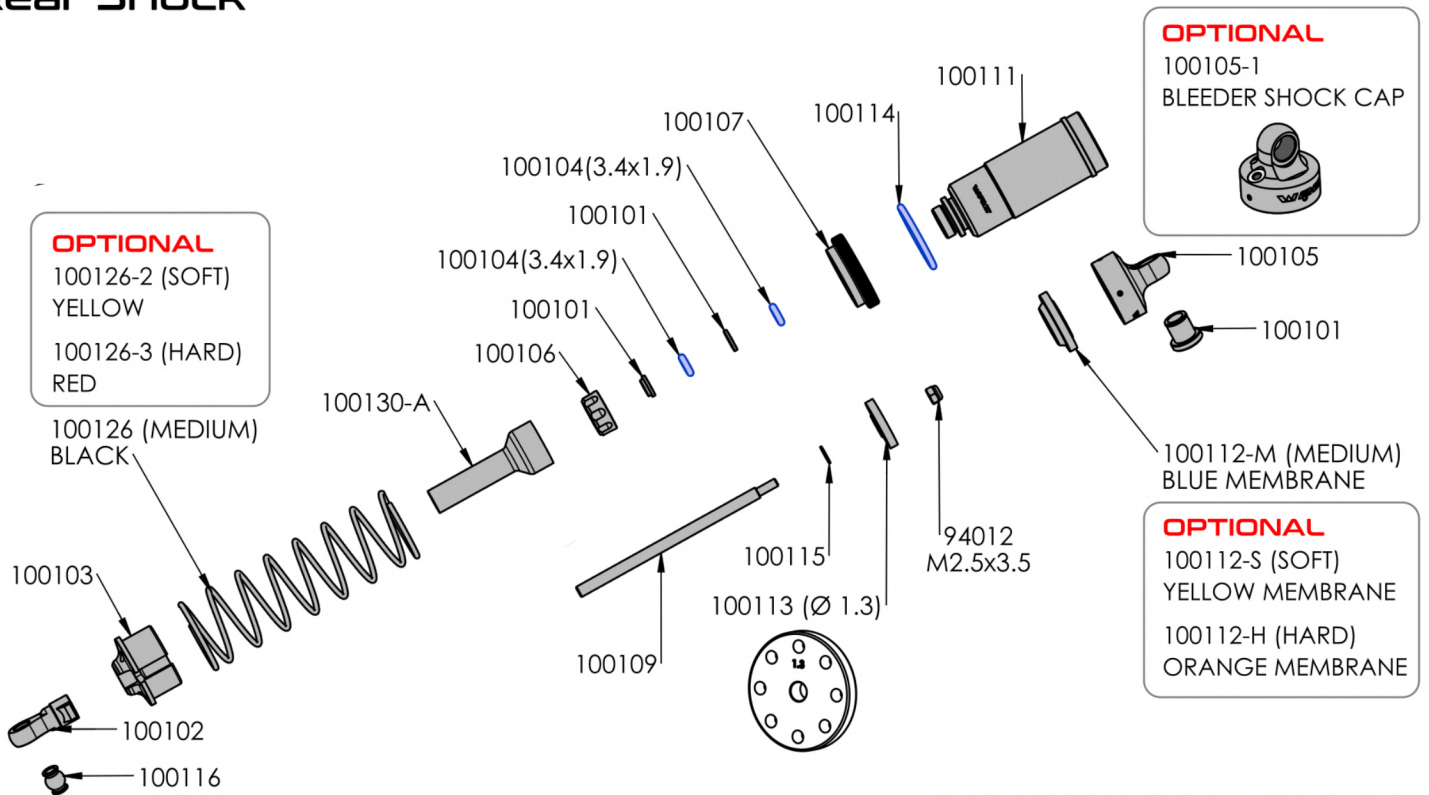
7



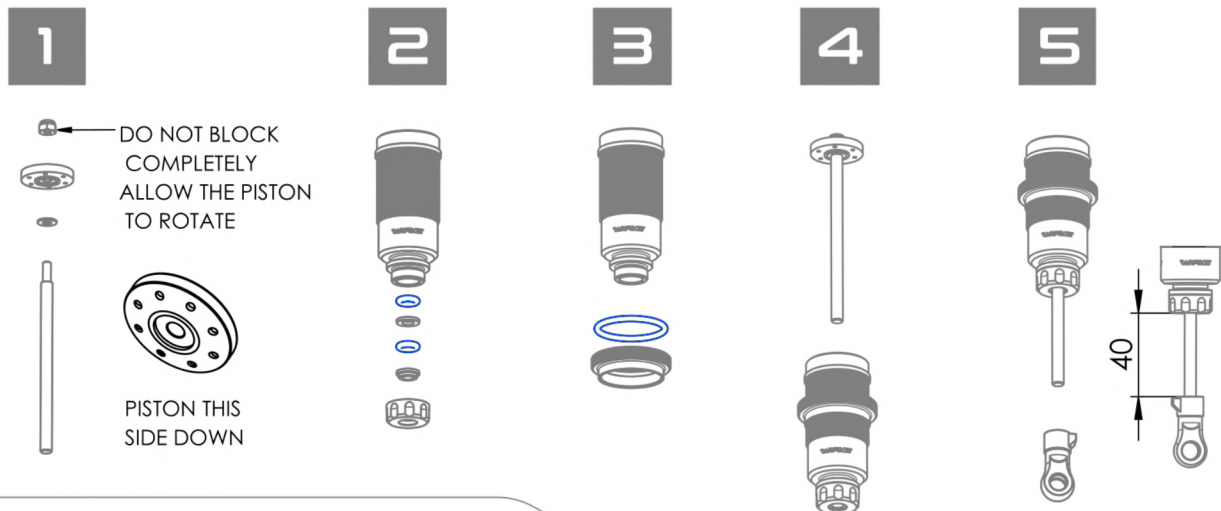
8



Rear Shock



ASSEMBLE 2 SETS



6



SHOCK FILLING

Fully extend the piston rod so the piston is at the bottom of the shock body.

Hold the shock upright and fill the shock body with shock oil as in the picture.

Let the oil settle and allow air bubbles to rise to the top. Slowly move the piston up and down until no more air bubbles appear. Add shock oil as necessary.

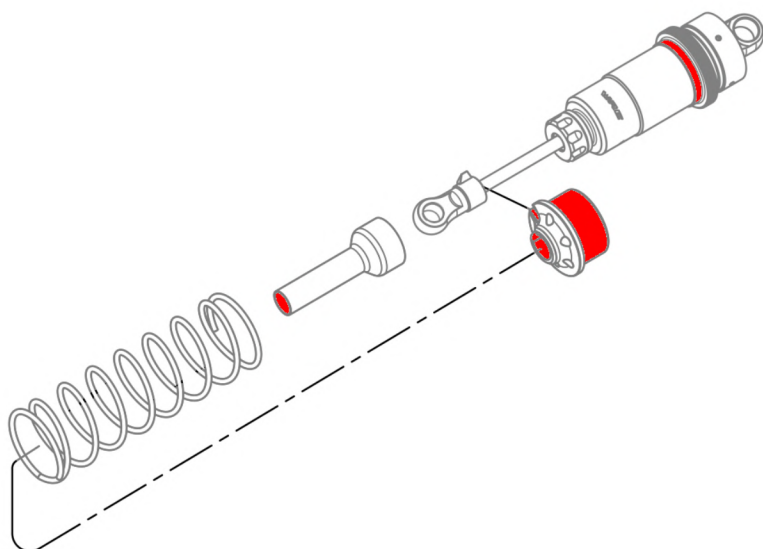
Pull the piston rod most of the way out of the shock bod. Let the shock rest for 5 minutes to allow the air bubbles to scape.

P- ONE SHOCKS OIL

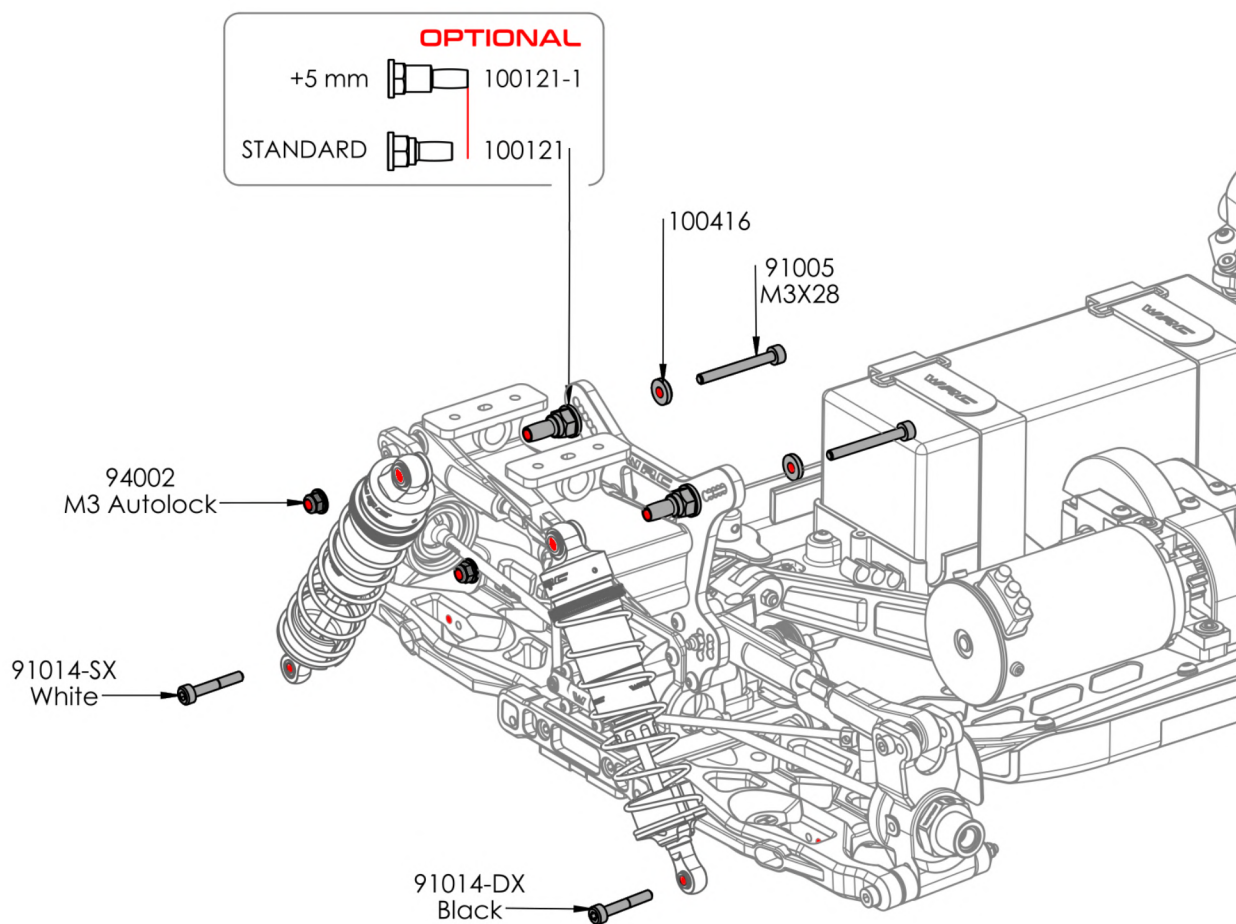
CODE	CST
SO-400	400
SO-500	500
SO-600	600 (IN KIT)
SO-700	700
SO-800	800

Rear Shock

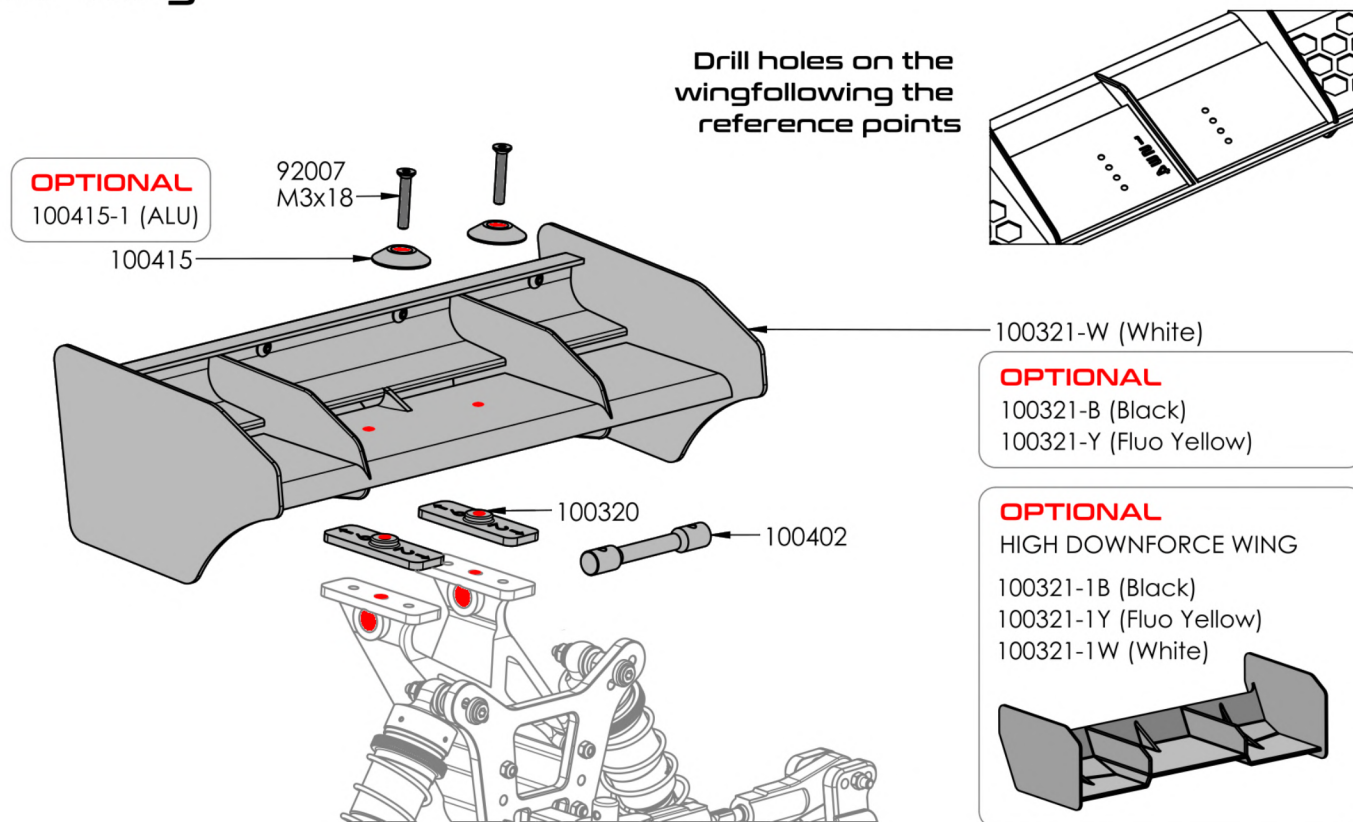
7



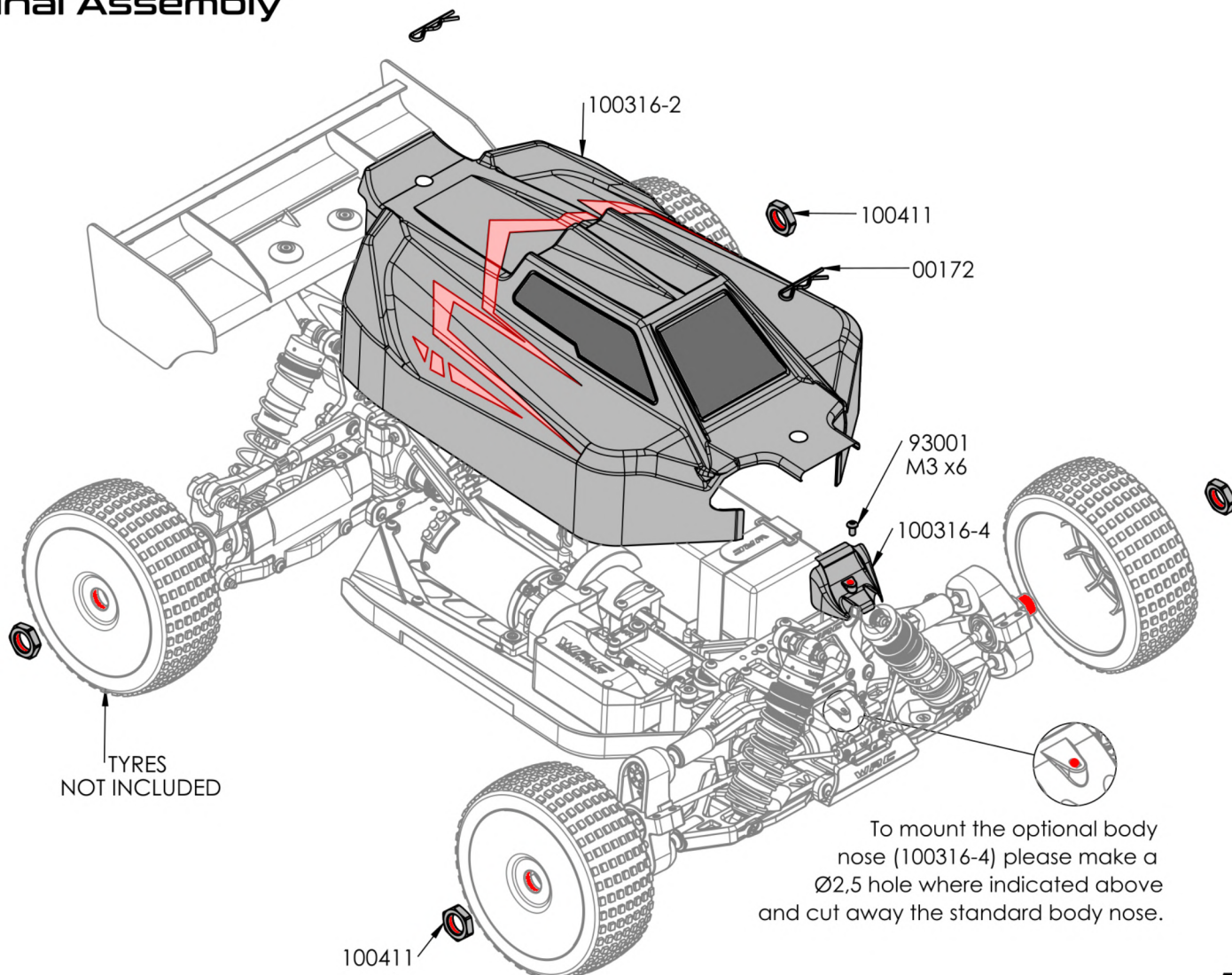
8



Rear Wing



Final Assembly

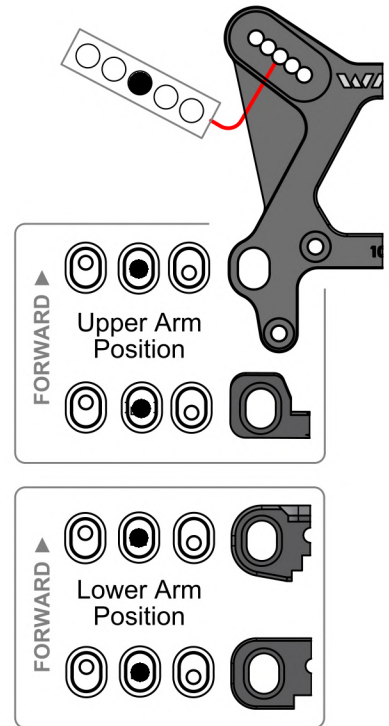
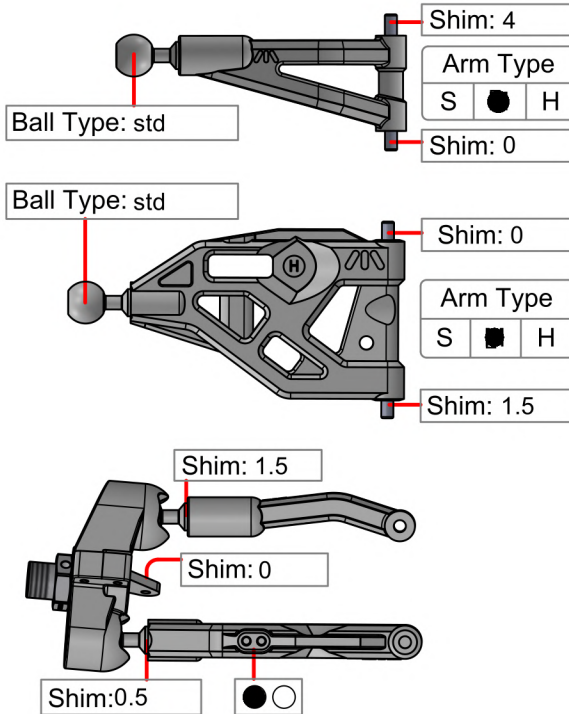


Driver: _____
Date: _____

Track: _____
Event: **Base Setup**

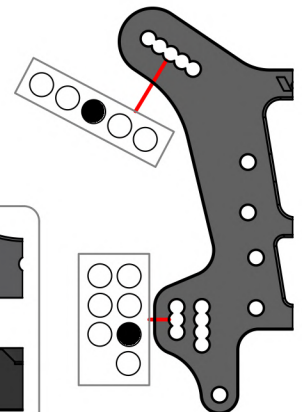
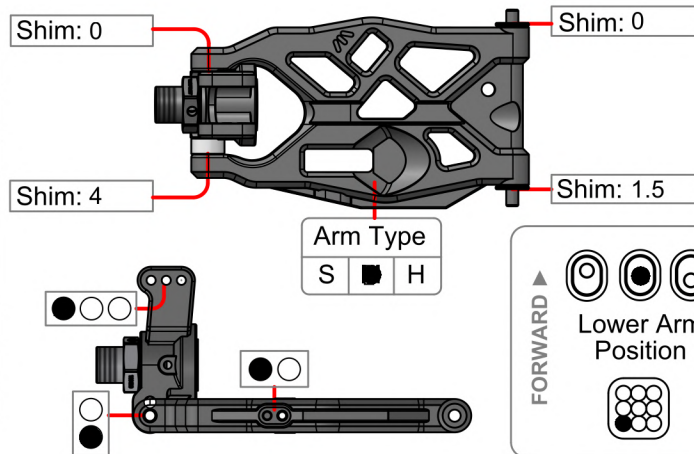
FRONT

Ride Height: 21
Camber: -1
Toe: -1
Anti-Roll Bar
Size: 2.3
Gap: 1
Ackerman
Drive Shaft: std
Chassie Brace: std
Hex: 0



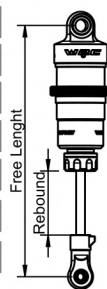
REAR

Ride Height: 27
Camber: -1
Toe: 1
Anti-Roll Bar
Size: 2.7
Gap: 1
Drive Shaft: std
Chassie Brace: std
Hex: 0



SHOCKS

	Front	Rear
Piston:	8x1.2	8x1.2
Membrane:	Blue	Blue
Oil:	600	600
Spring:	Black	Black
Rebound:	10mm	15mm
Free Length:	105	123



DIFFERENTIAL

	Front	Center	Rear
Case Mat.:	std	std	std
Oil:	5000	5000	5000
Crown Gear:	13-43		13-43

GEARING

Spur Gear	46
Pinion:	15

TYRES

	Front	Rear
Brand:		
Pattern:		
Insert:		
Wheels:		
Compound:		

ELECTRONICS

Motor:	
Battery:	
Esc:	
Servo:	
Radio:	
% Throttle:	
Epa:	
Expo:	

BODY & WING

Body:	WIRC
Wing:	WIRC High Downforce
Wing Height:	High Position
Gap to tower:	

TRACK

Size :	Medium
Traction:	Medium
Surface:	Medium

NOTES / OPTIONALS

Total Vehicle Weight: _____

Driver: _____

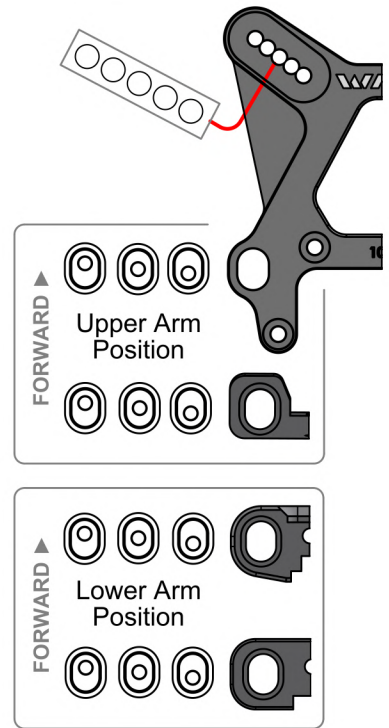
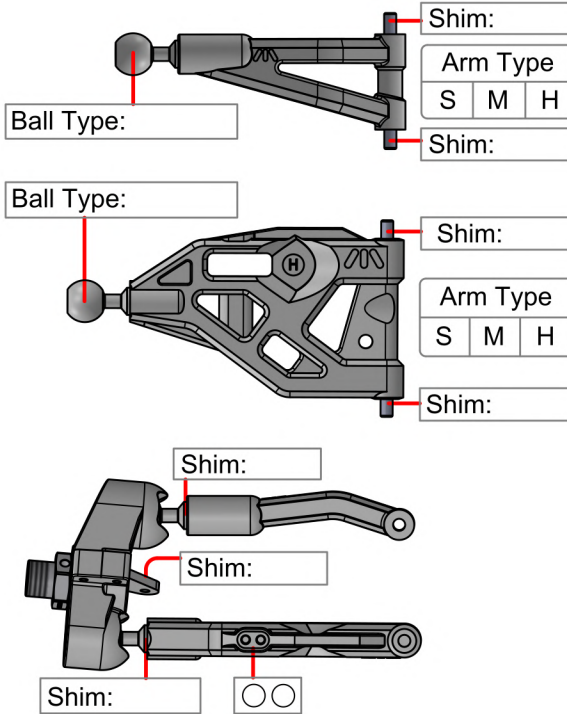
Track: _____

Date: _____

Event: _____

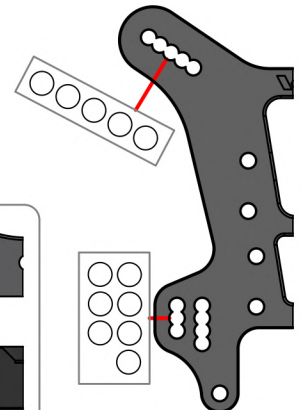
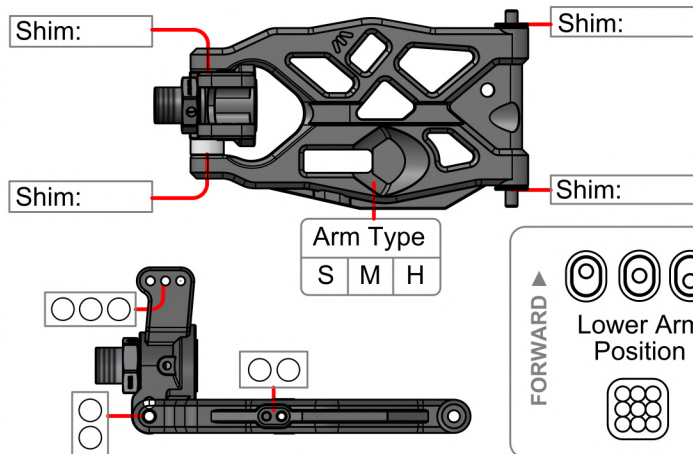
FRONT

Ride Height:
Camber:
Toe:
Anti-Roll Bar
Size:
Gap:
Ackerman
Drive Shaft:
Chassie Brace:
Hex:



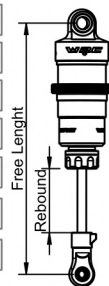
REAR

Ride Height:
Camber:
Toe:
Anti-Roll Bar
Size:
Gap:
Drive Shaft:
Chassie Brace:
Hex:



SHOCKS

	Front	Rear
Piston:		
Membrane:		
Oil:		
Spring:		
Rebound:		
Free Length:		



DIFFERENTIAL

	Front	Center	Rear
Case Mat.:			
Oil:			
Crown Gear:			
Spur Gear			
Pinion:			

GEARING

TYRES

	Front	Rear
Brand:		
Pattern:		
Insert:		
Wheels:		
Compound:		

ELECTRONICS

Motor:	
Battery:	
Esc:	
Servo:	
Radio:	
% Throttle:	
Epa:	
Expo:	

BODY & WING

Body:	
Wing:	
Wing Height:	
Gap to tower:	
Size :	
Traction:	
Surface:	

NOTES / OPTIONALS

Total Vehicle Weight: _____



NOTES: _____

[illegible]

SEXE





WWW.WIRCRACING.COM